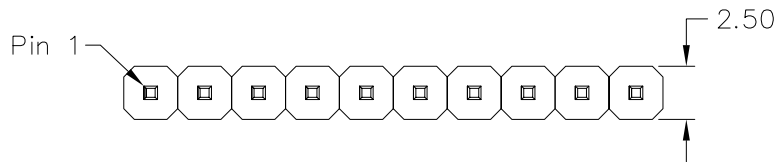


1 2 3 4 5 6 7 8 9 0

J



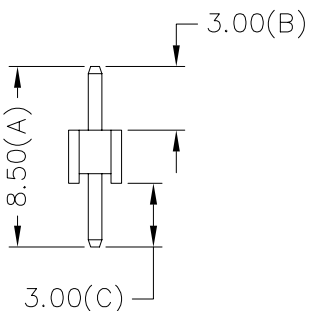
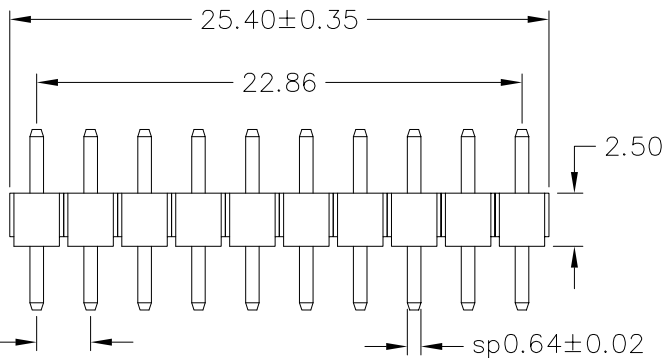
MATERIAL
Contact Pin : Brass

SPECIFICATION
Current Rate : 3 AMP
Insulation Resistance : 5000MΩMin. at DC 500V
Contact Resistance : 20mΩMax. at DC 100mA
Dielectric Voltage : AC 500V for one minute
Operation Temperature : -40°C to + 105°C

I

H

G

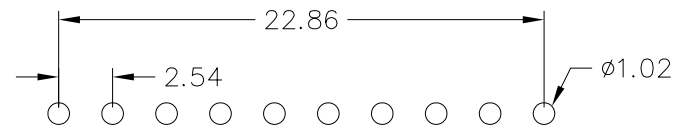


H-D0853030-1X10-LF
LEADFREE
RoHS Compliant

F

E

D



Recommended P.C.B Layout

C

B

	PART NO. H-D0853030-1X10		TOLERANCES ARE X ± 0.30 .X ± 0.20 .XX ± .XXX ± ANG ± 3°	DESCRIPTION:	PIN HEADER 2.54*2.54mm STRAIGHT TYPE, SINGLE ROW		
	DWG NO. H-D0853030-1X10				CHECKED BY CY	AREA	REVISIONS
焯倫股份有限公司	FILE NO.		DRAWING BY				
	UNIT / mm	SCALE 1:1	PROJECTION				

A