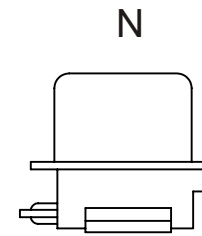
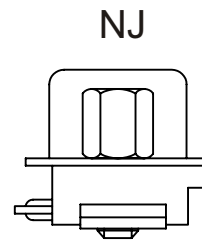
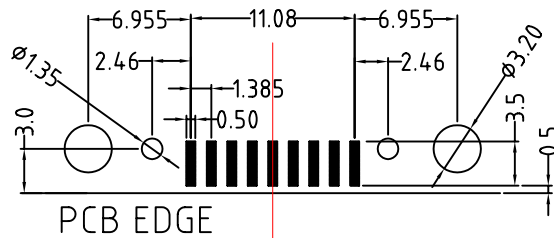
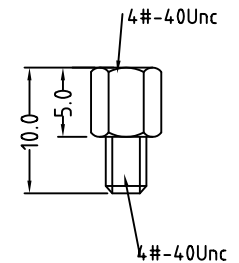


Recommend PCB Layout



Hs12



ELECTRICAL CHARACTERISTICS

Contact Current Rating:1Amperes.
 Dielectric Withstanding Voltage:AC 500V at sea level.
 Insulation Resistance:1000Megohms Min.
 Contact Resistance:30Milliohms Max.
 Operation Temperature : -55°C to +105°C.

Material

Contact :Copper Alloy.
 Insulator:LCP. Select PA6T /PA9T
 Shell: SPCC.
 Z-Piece: Copper Alloy.

RoHS Compliant

TOLERANCES ARE

MORETHANALL
 PCB CONNECTORS
 Cable ASSEMBLIES

煜倫股份有限公司

www.morethanall.com

DRAWING BY CY

CHECKED BY GENIUS

UNIT / mm SCALE 1 : 1

DATE

SIZE A4

X. ±
 .X ±
 .XX ±
 .XXX ±
 ANG ±

PJECTION

照片框

ORDER INFORMATION

DW-PxxZ1-09-LF
 SERIES | LEADFREE
 | 09 WAY
 CLIP
 N:NUT
 NJ:NUT+JACKSCREW
 MALE NH:NUT+HEX SCREW

DESCRIPTION: SLIM 09M SMD /PLANE