

**SPECIFICATIONS**

**ELECTRICAL CHARACTERISTICS:**

Contact Current Rating: 5 Amperes.  
 Dielectric Withstanding Voltage: AC 1000/60sec.r.m.s.  
 Insulation Resistance: 5000 MΩohms Minimum  
 Contact Resistance: 25 Milliohms Maximum.  
 Operating Temperature: -55°C to +105°C.

**MECHANICAL CHARACTERISTICS:**

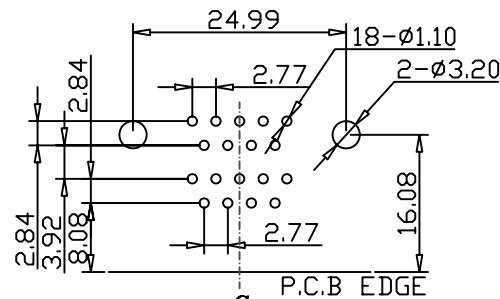
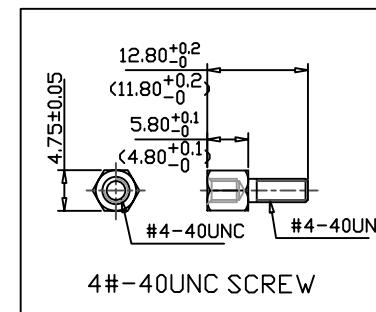
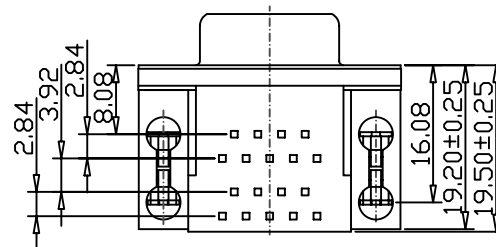
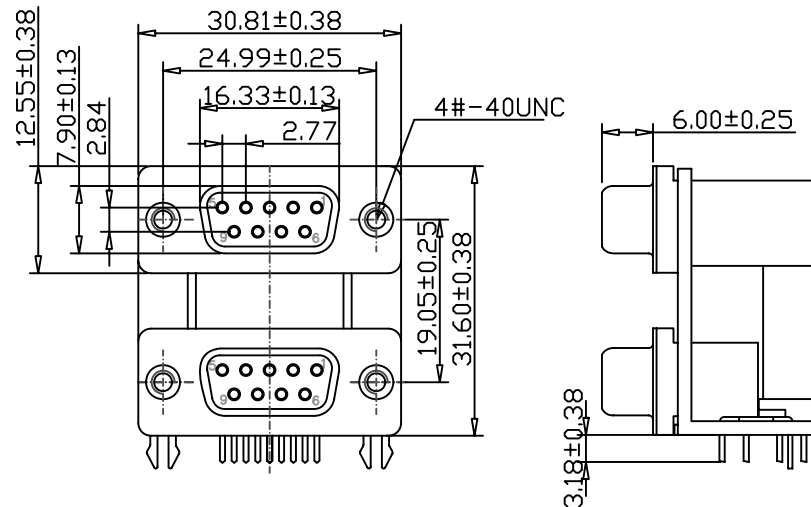
Contact Insertion Force: 341 g. Maximum.  
 Contact Separation Force: 21 g. Minimum.

**MATERIALS:**

Contacts: Brass.  
 Insulator: PBT UL 94V-0 Rated.  
 Shell: Cold Roller Steel.

**FINISHES:**

Contact: Gold Flash.  
 Shell: Nickel Plated.



RECOMMENDED P.C.B LAYOUT

DRB1-FNH19-0909-LF  
 LEADFREE

RoHS Compliant



PART NO. DRB1-FNH19-0909

DWG NO. DRB1-FNH19-0909

CHECKED BY CY

FILE NO.

DRAWING BY

TOLERANCES ARE

.X ± 0.2  
 .XX ±  
 .XXX ±  
 AWG

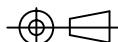
DESCRIPTION: D-SUB CONNECTOR 9 FEMALE/9 FEMALE DUAL PORT

焯倫股份有限公司

UNIT / mm

SCALE 1:1

PROJECTION



AREA

REVISIONS

HK

DATE