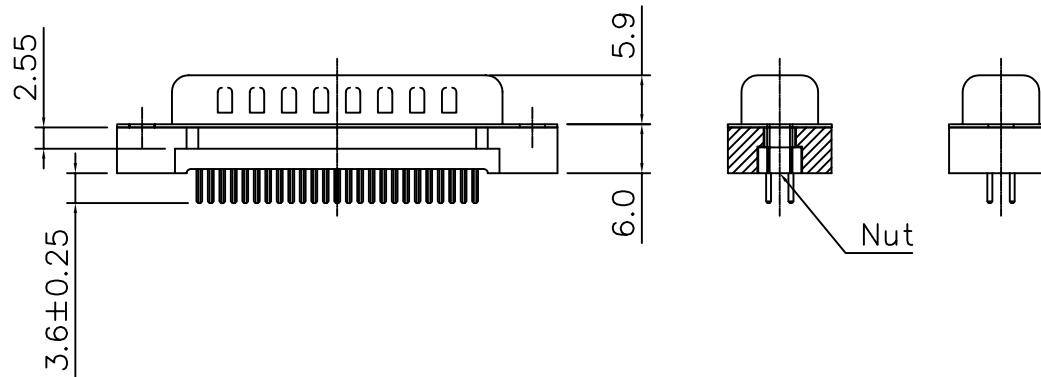


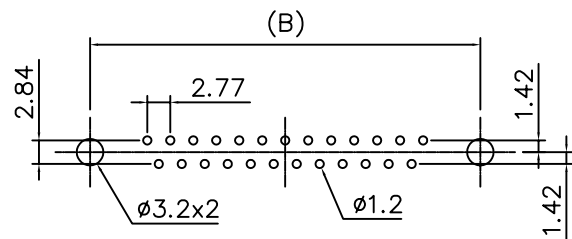
Specifications

Contact Resistance: 30mΩmax. at DC
 100mA
 Insulator Resistance: 1000MΩmin. at DC
 500V
 Current Rating: 5 AMP
 Dielectric Withstanding
 Voltage: AC 1000V For 1 minute
 Operating Temperature: -55°C ~ +105°C
 Contact: Brass
 Housing: PBT & 30% Glass Fiber (UL
 94V-0)



Dimension

Positon	A	B	C
9	16.92	24.99	30.81
15	25.50	33.32	39.14
25	38.96	47.04	53.04
37	55.42	63.50	69.32



Recomended PCB Layout

RoHS Compliant

TOLERANCES ARE

MORETHANALL
 PCB CONNECTORS
 Cable ASSEMBLIES

煜倫股份有限公司

www.morethanall.com

DRAWING BY CY

CHECKED BY GENIUS

UNIT / mm SCALE 1 : 1

DATE

SIZE A4

X.±

.X±

.XX±

.XXX±

ANG±

PJECTION

照片框

ORDER INFORMATION

DDM-PNM3-xx-LF
 SERIES | | | LEADFREE
 | | | 09~37WAY
 | M3
 | NUT
 | MALE

DESCRIPTION: D-SUB DIP STRAIGHT TYPE W/O METAL REAT SHELL