

Features:

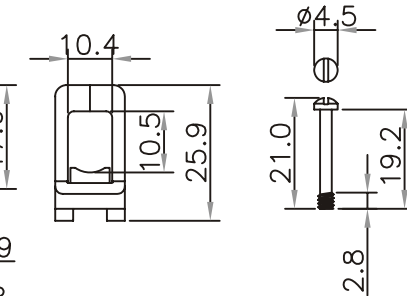
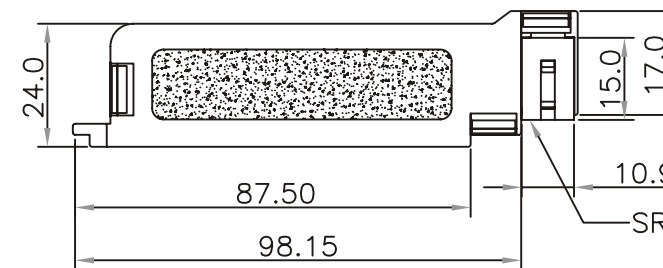
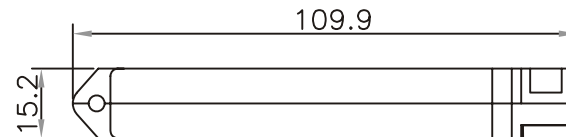
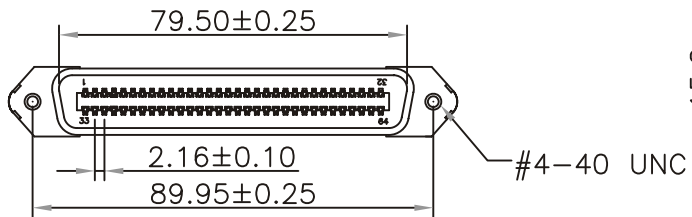
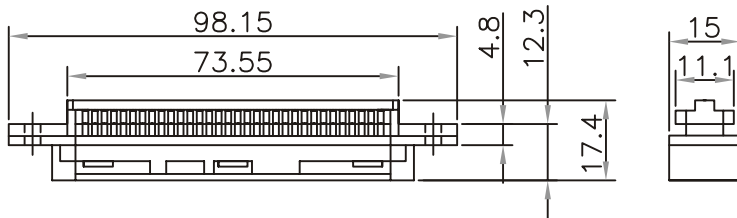
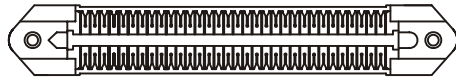
- *All connectors are available 24, 26, 28 AWG copper wire.
- *Dust cover to protects.
- *90° and 180° snap on strain relief cover.
- *Interconnection system for cable to cable application.

General Specifications:

- *Dielectric: Glass filled polyester Recognized UL 94V-0
- *Contact: Phosphor Bronze
- *Plating: Gold Plate over Nickel

Performance Characteristics:

- *Current Rating: 1A DC/max. per contact pair 1A/max. for simultaneous current on all contacts.
- *Contact Resistance: 25mΩ/Max.
- *Cable A'ssy contact resistance: 70mΩ/Max.
- *Dielectric with standing voltage: AC 1000V
- *Insulation Resistance: 10000MΩ/Min.
- *Temperature Range: -55℃ to +125℃



UNIT : mm

RoHS Compliant

TOLERANCES ARE

MORETHANALL
PCB CONNECTORS
Cable ASSEMBLIES

煜倫股份有限公司

www.morethanall.com

DRAWING BY CY

CHECKED BY GENIUS

UNIT / mm

SCALE 1 : 1

DATE

SIZE A4

PPOJECTION

X, ±
.X ±
.XX ±
.XXX ±
ANG ±

照片框

ORDER INFORMATION

CTL-PK-64-LF
SERIES T LEADFREE
64 WAY
BLACK
MALE

DESCRIPTION: Ribbon Cable IDC Type Connector 64 Pin R/A Cover Plug Screw Lock Type