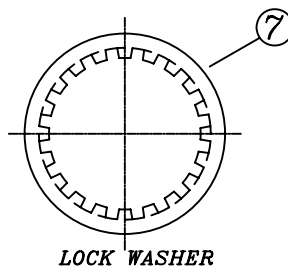
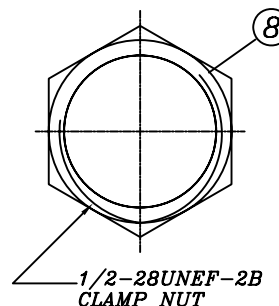


RECOMMENDED PC BOARD LAYOUT
WITHOUT MOUNTING POSTS

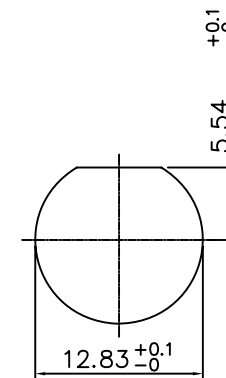
MATERIAL & FINISH



LOCK WASHER



1/2-28UNEF-2B
CLAMP NUT



RECOMMENDED MOUNTING HOLE
MAXIMUM PANEL THICKNESS: 5.5MM

MATERIAL & FINISH

- ① CENTER CONTACT : BRONZE, GOLD PLATING
- ② BODY : ZINC ALLOY NICKEL PLATING
- ③ HOUSING : PBT (94 V-0) WHITE
- ④ INSULATOR : PE-606
- ⑤ MOUNTING POST : BRONZE, TIN PLATING
- ⑥ SOLDER TAIL : COPPER WIRE, TIN PLATING
- ⑦ WASHER : STEEL, NICKEL PLATING
- ⑧ NUT : BRASS, NICKEL PLATING

RoHS Compliant

TOLERANCES ARE

MORETHANALL
PCB CONNECTORS
Cable ASSEMBLIES

煜倫股份有限公司

www.morethanall.com

DRAWING BY CY

CHECKED BY GENIUS

UNIT / mm

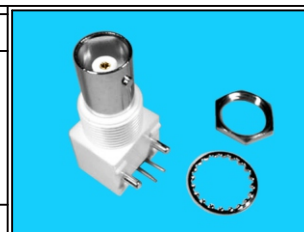
SCALE 1 : 1

DATE

SIZE A4

P PROJECTION

X, ±
.X ± 0.30
.XX ± 0.20
.XXX ±
ANG ±



ORDER INFORMATION

BNC-JR13WWH-50-LF
SERIES | JACK | LEADFREE
50 OHM
WHITE
WASHER+NUT
HIGH 13.16mm
DIP 90°

DESCRIPTION: 50 OHM BNC R/A PCB MOUNT JACK