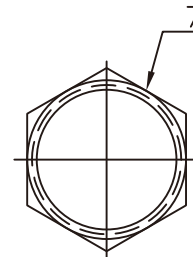
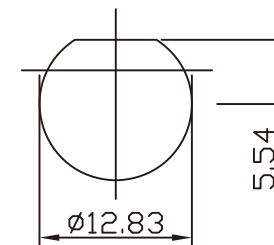


LOCK WASHER



1/2-28UNEF-2B  
CLAMP NUT



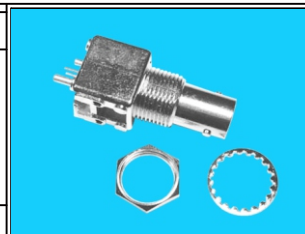
RECOMMENDED MOUNTING HOLE  
MAXIMUM PANEL THICKNESS: 5.5MM  
RECOMMENDED MOUNTING TORQUE:  
12 INCH-POUNDS MAX

NO	DESCRIPTION	MATERIAL	FINISH	QTY
7	NUT	BRASS	NICKEL	1
6	WASHER	PHOSPHOR BRONZE	NICKEL	1
5	SOLDER TAIL	BRASS WIRE	TIN LEAD	1
4	MOUNTING POST	BRASS	TIN LEAD	1
3	INSULATOR	PE-606	NONE	1
2	BODY	ZINC ALLOY	NICKEL	1
1	CENTER CONTACT	PHOSPHOR BRONZE	GOLD	1

RoHS Compliant

TOLERANCES ARE

0.5-5	$\pm 0.2$
6-30	$\pm 0.4$
30-120	$\pm 0.6$
120-315	$\pm 1$
315-1000	$\pm 1.6$
1000-2000	$\pm 2.4$



ORDER INFORMATION

BNC-JD15WFM-50-LF  
SERIES | | | | LEADFREE  
| | | | 50 OHM  
JACK | | | FULL METAL  
| | | WASHER+NUT  
| | | HIGH 15.8mm  
DIP 180°

DESCRIPTION: 50Ω BNC VERTICAL PCB MOUNT  
JACK METAL BODY (HIGH PROFILE)

**MORETHANALL**  
PCB CONNECTORS  
Cable ASSEMBLIES

煜倫股份有限公司

www.morethanall.com

DRAWING BY CY

CHECKED BY GENIUS

UNIT/mm SCALE 1:1

DATE

SIZE A4

PJECTION