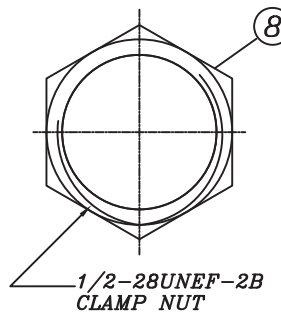
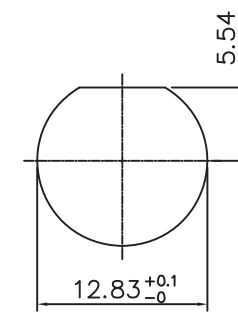


LOCK WASHER



1/2-28UNEF-2B CLAMP NUT



RECOMMENDED MOUNTING HOLE
MAXIMUM PANEL THICKNESS: 5.5MM

RECOMMENDED PC BOARD LAYOUT
WITHOUT MOUNTING POSTS

MATERIAL & FINISH

- ① CENTER CONTACT PHOSPHOR BRONZE GOLD
- ② BODY : ZINC ALLOY NICKEL
- ③ HOUSING : PBT (94 V-0)
- ④ INSULATOR POLYPROPYLENE (94 V-0)
- ⑤ MOUNTING POST BRASS TIN LEAD
- ⑥ SOLDER TAIL : COPPER WIRE, TIN LEAD
- ⑦ WASHER PHOSPHOR BRONZE NICKEL
- ⑧ NUT : BRASS, NICKEL PLATING

RoHS Compliant

TOLERANCES ARE

MORETHANALL
PCB CONNECTORS
Cable ASSEMBLIES

煜倫股份有限公司

www.morethanall.com

DRAWING BY CY

CHECKED BY GENIUS

UNIT / mm

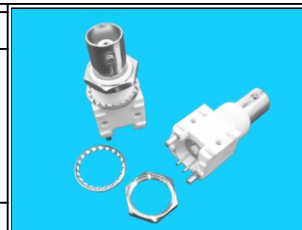
SCALE 1:1

DATE

SIZE A4

PJECTION

X, ±
.X ± 0.30
.XX ± 0.20
.XXX ±
ANG ±



ORDER INFORMATION

BNC-JD13WWH-50-LF
SERIES | | | LEADFREE
JACK | | | 50 OHM
WHITE
NUT+WASHER
WIDE 13.1mm
DIP 180°

DESCRIPTION: 50 OHM BNC VERTICAL PCB/PANEL MOUNT JACK