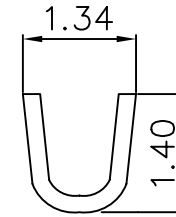
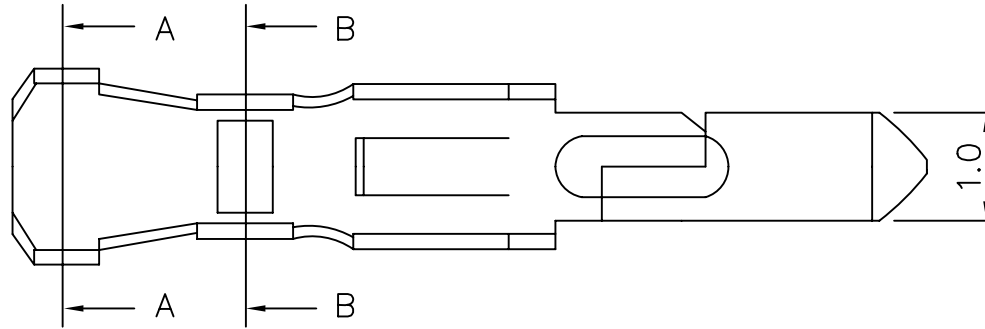
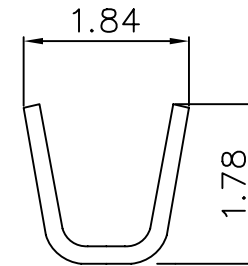
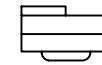
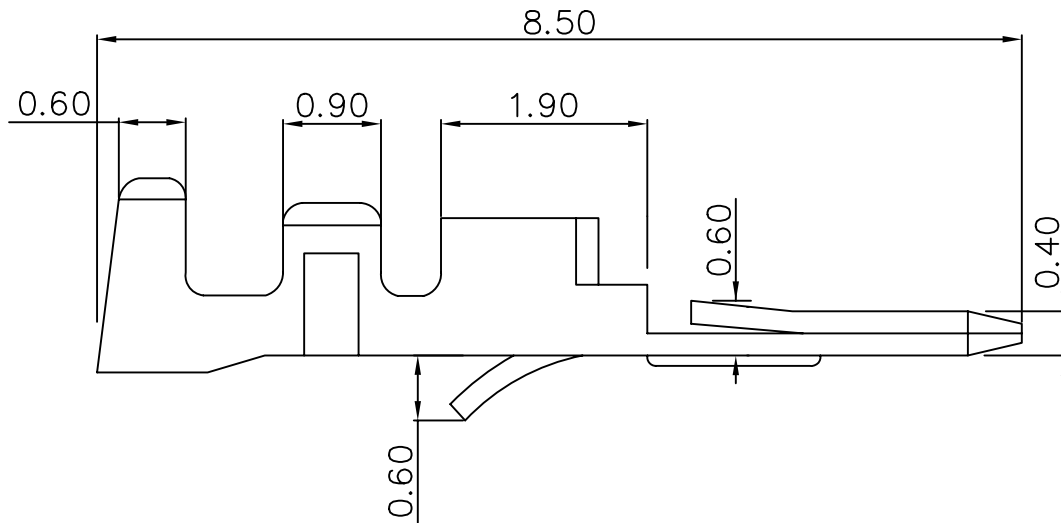


Material: Brass or phosphor bronze
 Current rating: 1A, AC/DC
 Voltage rating: 125V, AC/DC
 Applicable wire range: AWG#24-28



B-B



A-A

MORETHANALL
 CONNECTORS
 ASSEMBLIES

PART NO. PR-M-24

DWG NO. PR-M-24

FILE NO.

CHECKED BY CY

DRAWING BY

TOLERANCES ARE

.X ± 0.3
 .XX ±
 .XXX ±
 AWG

DESCRIPTION:

煜倫股份有限公司

UNIT / mm

SCALE 1:1

PROJECTION

AREA

REVISIONS

HK

DATE