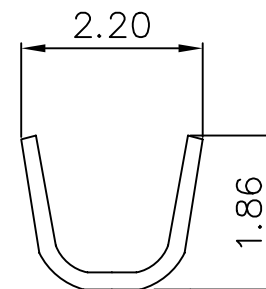
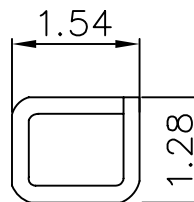
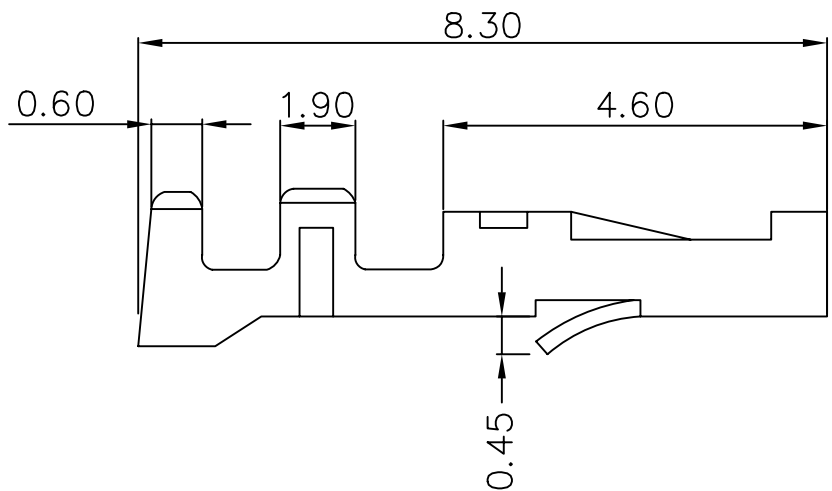
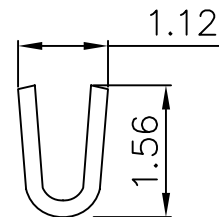
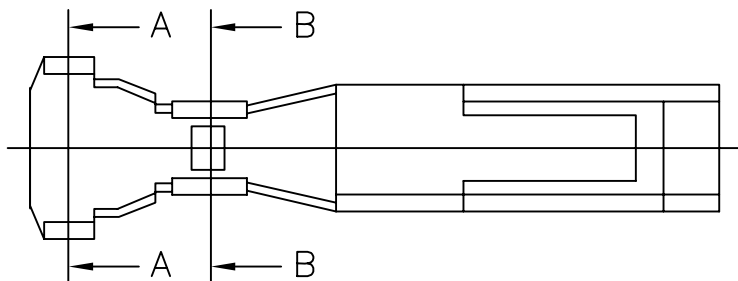


Material: Brass or phosphor bronze  
 Current rating: 1A, AC/DC  
 Voltage rating: 125V, AC/DC  
 Applicable wire range: AWG#24-28



**MORETHANALL**  
 CONNECTORS  
 ASSEMBLIES

PART NO. PR-F-24

DWG NO. PR-F-24

CHECKED BY CY

TOLERANCES ARE

DESCRIP TION:

FILE NO.

DRAWING BY

.X ± 0.3  
 .XX ±  
 .XXX ±  
 AWG

AREA

REVISIONS

HK

DATE

焯倫股份有限公司

UNIT / mm

SCALE 1:1

PROJECTION