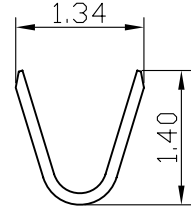
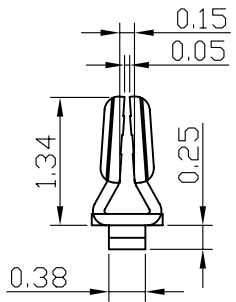
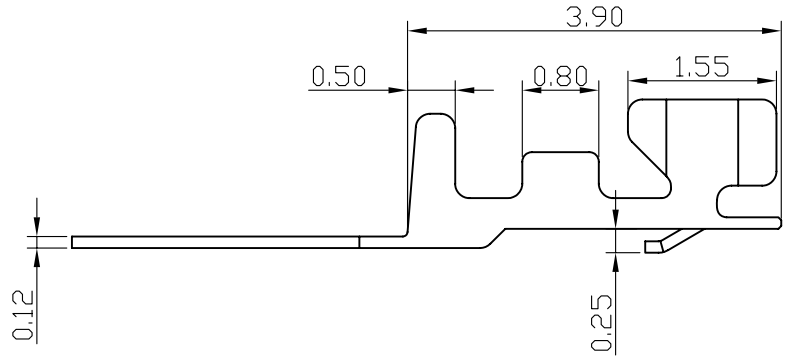


Section A - A



Section B - B



Section C - C

SPECIFICATIONS

Electrical
 Current Rating: 1A AC, DC
 Voltage Rating: 50V AC/ max.
 Operating Temp.: -25°C ~ +85°C
 Insulation Resistance: 100MΩ/ min.
 Contact Resistance: 20MΩ/ max.
 Dielectric Withstanding Voltage: 500V AC/ min.
 Material
 Terminal material: Phosphor Bronze/ Tin-plated
 Wire Range: 28 to 32AWG

SHD-T-28-LF
 LEADFREE

RoHS Compliant



PART NO. SHD-T-28		APPROVED BY CY		TOLERANCES ARE		DESCRIP TION:				
DWG NO. SHD-T-28		DRAWING BY		.X .XX .XXX AWG						
FILE NO.		PROJECTION								
UNIT / mm	SCALE 1:1					AREA	REVISIONS	HK	DATE	

煜倫股份有限公司