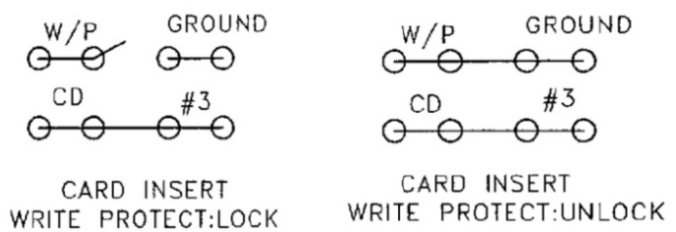


SPECIFICATION
MATERIAL
 Insulator: Thermal Plastic UL94V-0
 Contacts: Copper Alloy
 Shell: Stainless Steel
CONTACT PLATING
 Underplate: 50µ" Nickel
 Contact Area: 1µ"~30µ" Selective Gold
 Solder Tails Area: 100µ" Tin/Lead(Brighten Tin) or 100µ" Tin/Lead Free(Brighten Tin/Matte Tin)
ELECTRICAL
 Operation Voltage: 3.3 V
 Current Rating: 0.5 Amps Max.
 Contact Resistance: 40 mohms Initial
 Insulation Resistance: 1000 Mohms Min. @ 500 VDC
 Dielectric Withstanding Voltage: 250 VAC / minute
 Operating Temperature: -20°C to +60°C
 Mating Cycles: 10,000 Insertions(In Office)

SDC-W24PB02xx-09-LF
 LEADFREE
 15:1.5mm STAND OFF
 18:1.8mm STAND OFF

RoHS Compliant

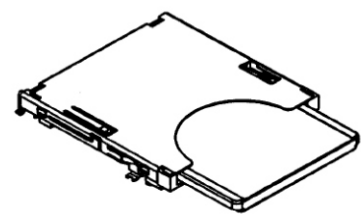
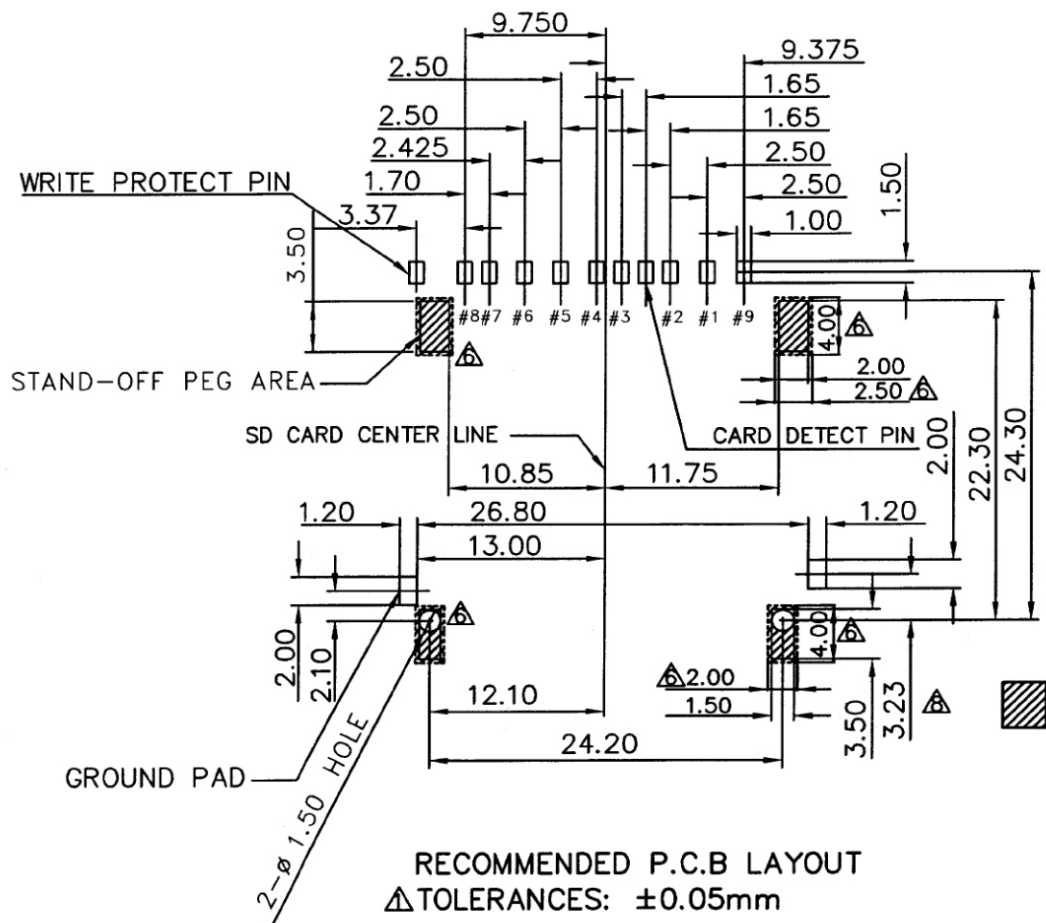


STAND-OFF	DIM-H	DIM-T
B	1.50	4.15
C	1.80	4.45

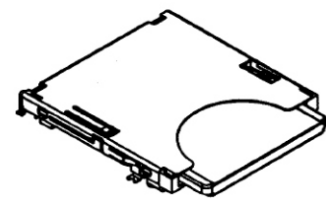
MORETHANALL
 CONNECTORS
 ASSEMBLIES

PART NO. SDC-W24PB02xx-09		CHECKED BY CY	TOLERANCES ARE .X ± 0.2 .XX ± 0.1 .XXX ± AWG	DESCRIP TION:	AREA	REVISIONS	HK	DATE
DWG NO. SDC-W24PB02xx-09								
FILE NO.		PROJECTION						
UNIT / mm	SCALE 1:1							

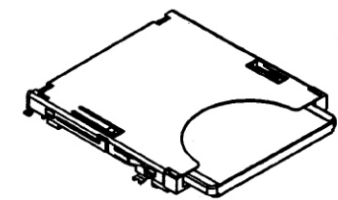
焜倫股份有限公司



CARD INSERTION POSITION



CARD CONTACT POSITION



CARD COMPRESSION POSITION



PART NO. SDC-W24PB02xx-09

DWG NO. SDC-W24PB02xx-09

CHECKED BY CY

TOLERANCES ARE

DESCRIPTION: SCN 7P/EH 7P L:250mm

FILE NO.

DRAWING BY

.X ± 0.38
.XX ± 0.25
.XXX ±
AWG

煜倫股份有限公司

UNIT / mm

SCALE 1:1

PROJECTION

AREA

REVISIONS

HK

DATE