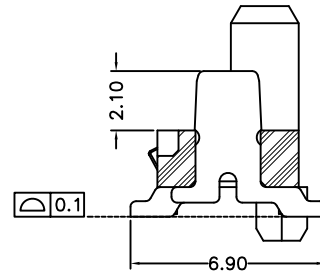
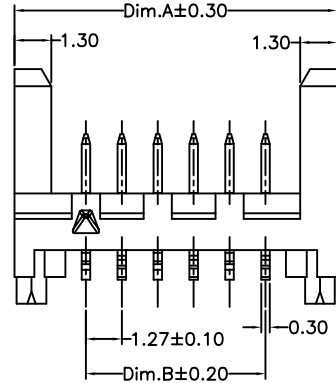
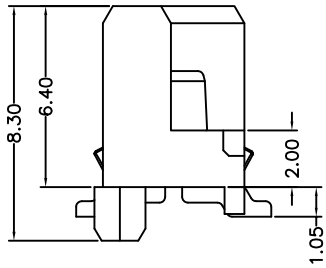
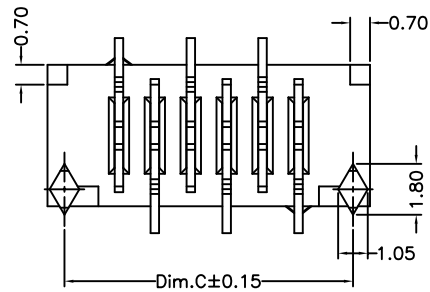


**Specifications:**

Current rating:1.0A AC,DC  
 Voltage rating:30V AC,DC  
 Contact resistance:20m ohm Max  
 Insulation resistance:1000M ohm Min  
 Withstanding voltage:500V AC for one minute  
 Operating Temperature:-40°C ~ +105°C  
**Materials:**  
 Insulator:High Temp Plastic (Nylon46 UL94V-0)  
 Insulator Color:Black  
 Contact:Phosphor Bronze  
 Contact Plated:Tin Plated

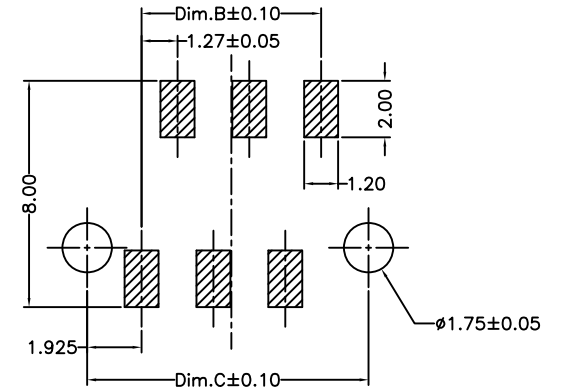


PF-PVP-xx-LF  
 LEADFREE  
 RoHS Compliant



**Dimension:**

Pos.	Dimension:			Pos.	Dimension:		
	A	B	C		A	B	C
04	8.86	3.81	7.66	16	24.10	19.05	22.90
06	11.40	6.35	10.20	18	26.64	21.59	25.44
08	13.94	8.89	12.74	20	29.18	24.13	27.98
10	16.48	11.43	15.28	22	31.72	26.67	30.52
12	19.02	13.97	17.82	24	34.26	29.21	33.06
14	21.56	16.51	20.36	26	36.80	31.75	35.60



PCB LAYOUT



PART NO. PF-PVP-xx

DWG NO. PF-PVP-xx

FILE NO.

UNIT / mm

SCALE 1:1

CHECKED BY CY

DRAWING BY

PROJECTION

TOLERANCES ARE

.X ± 0.2  
 .XX ± 0.1  
 .XXX ±  
 AWG

DESCRIPTION: 1.27mm IDC Connector SMD Type

AREA

REVISIONS

HK

DATE

煜倫股份有限公司