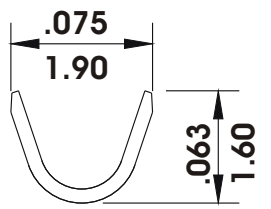
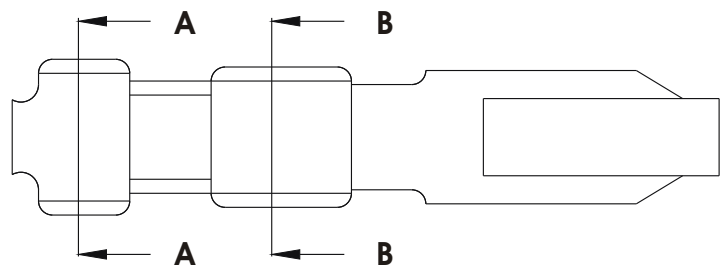


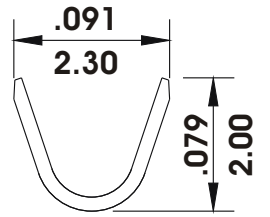
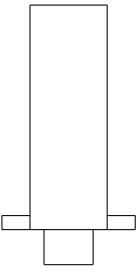
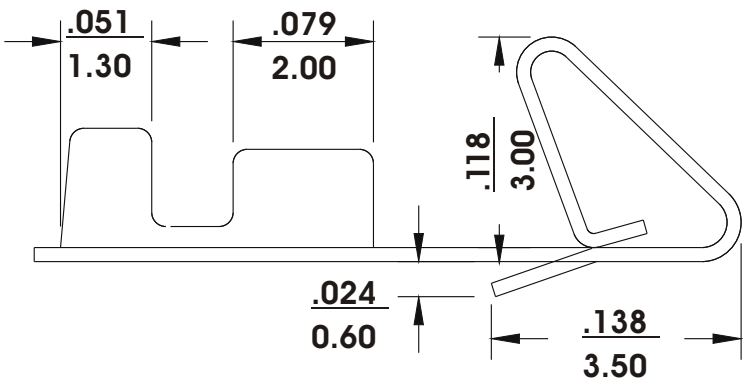
RK Crimp Terminal

- * Material : Brass or Phosphor bronze
- * Current rating : 2.5A, AC/DC
- * Voltage rating : 250V AC/DC
- * Applicable wire AWG #26- #22



B-B

RK-T-22-LF
LEADFREE
RoHS Compliant



A-A

inch
mm



PART NO. **RK-T-22**

DWG NO. **RK-T-22**

CHECKED BY **CY**

TOLERANCES ARE

DESCRIP TION:

煜倫股份有限公司

FILE NO.

DRAWING BY

.X ± 0.2
.XX ±
.XXX ±
AWG

AREA REVISIONS HK DATE

UNIT / mm

SCALE 1:1

PROJECTION

AREA REVISIONS HK DATE