

# SPECIFICATIONS

## Electrical

Current Rating: 5A AC, DC

Voltage Rating: 250V AC, DC

Operating Temp.: -25°C ~ +85°C

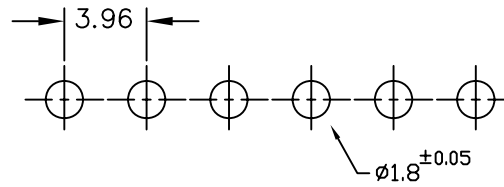
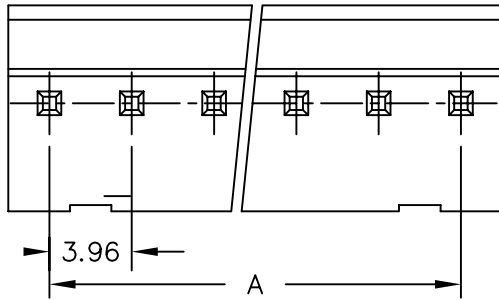
Insulation Resistance: 1000MΩ/ min.

Dielectric Withstanding Voltage: 1500V AC/ min.

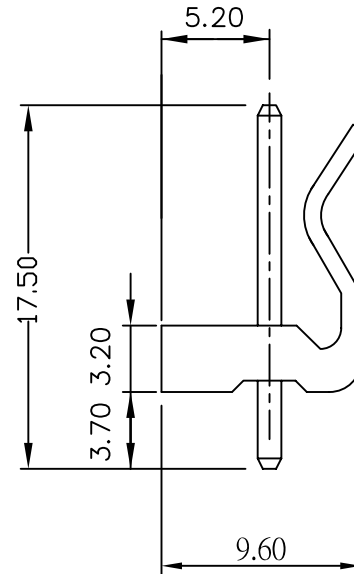
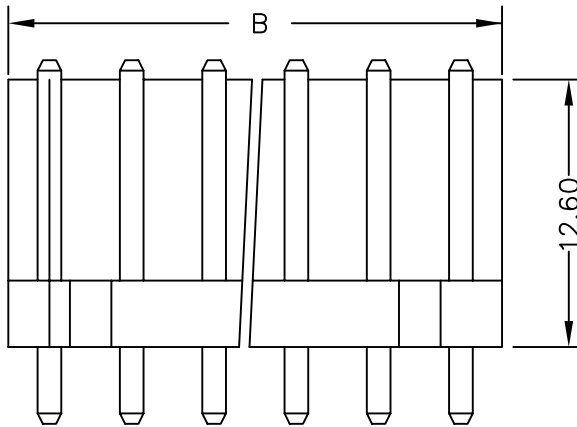
Contact Resistance: 10mΩ/ max.

## Material

Material: Nylon66, UL94V-2



RECOMMENDED P.C.BOARD HOLE DIMM.



Poles	Dimension mm (in.)		Part No.	Note.
	A	B		
2	3.96	7.92	KK-D-02	
3	7.92	11.88	KK-D-03	
4	11.88	15.84	KK-D-04	
5	15.84	19.80	KK-D-05	
6	19.80	23.76	KK-D-06	
7	23.76	27.72	KK-D-07	
8	27.72	31.68	KK-D-08	
9	31.86	35.64	KK-D-09	
10	35.64	39.60	KK-D-10	
11	39.60	43.56	KK-D-11	
12	43.56	47.52	KK-D-12	
13	47.52	51.48	KK-D-13	
14	51.48	55.44	KK-D-14	
15	55.44	59.40	KK-D-15	
16	59.40	63.36	KK-D-16	
17	63.36	67.32	KK-D-17	
18	67.32	71.28	KK-D-18	
20	75.24	79.20	KK-D-20	

**RoHS Compliant**

TOLERANCES ARE

**MORETHANALL**  
PCB CONNECTORS  
Cable ASSEMBLIES

DRAWING BY CY

CHECKED BY GENIUS

UNIT/ mm

SCALE 1:1

DATE

SIZE A4

X. ±  
.X ± 0.30  
.XX ± 0.20  
.XXX ±  
ANG ±

P PROJECTION



**ORDER INFORMATION**



DESCRIPTION: 3.96mm Wire-to-Board Header Dip 180° Type

煜倫股份有限公司

www.morethanall.com