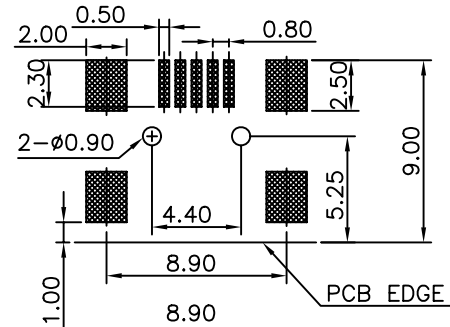
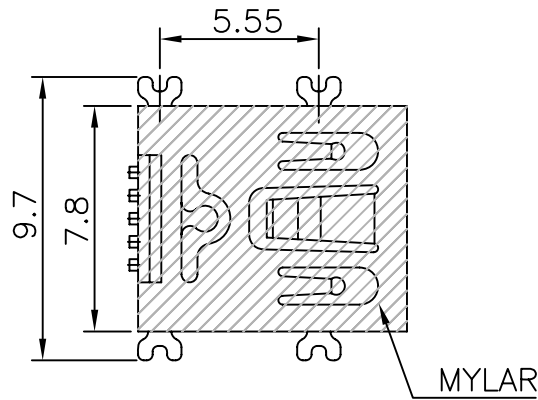
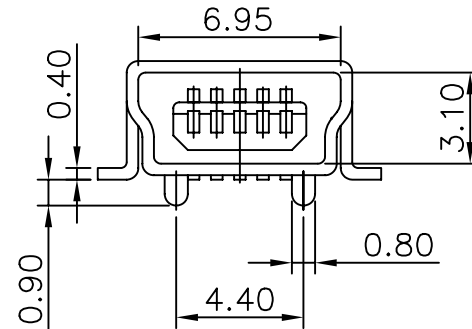
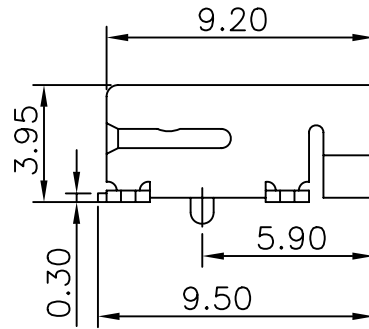


**Material:**

- (1). Insulator : NYLON 9T, UL94V-0.
- (2). Contact : Phosphor Bronze.
- (3). Shell : Brass.
- (4). Finish :  
 Contact = Gold plated on contact area &  
 Tin/Lead plated on terminal area  
 Shell = Nickel plated.



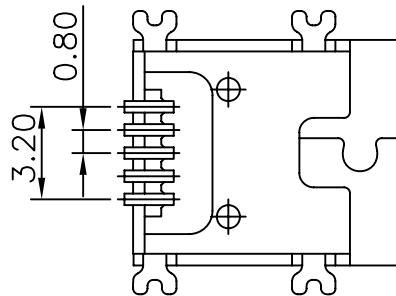
**PCB LAYOUT**



(3). P5: Plug, 5 poles

MSB-SWCR-5B-LF  
 R:REEL LEADFREE

RoHS Compliant



**PS:REEL 1R=800PCS**



PART NO. MSB-SWCR-5B		CHECKED BY CY		TOLERANCES ARE .X ± 0.2 .XX ± .XXX ± AWG	DESCRIP TION:			
DWG NO. MSB-SWCR-5B		DRAWING BY			AREA	REVISIONS	HK	DATE
FILE NO.		PROJECTION						
UNIT / mm	SCALE 1:1							

煜倫股份有限公司