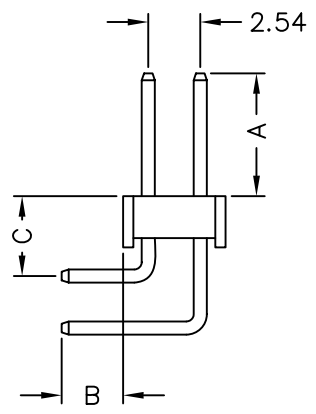
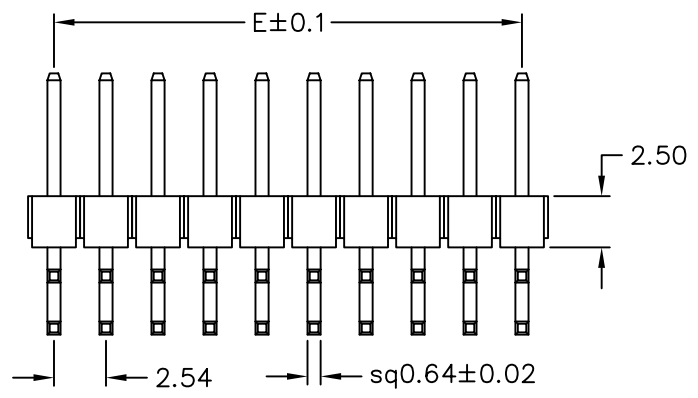


MATERIAL
 Insulator : 30% Glass fiber PBT
 Contact Pin : Brass

SPECIFICATION
 Current Rate : 3 AMP
 Insulation Resistance : 5000MΩMin. at DC 500V
 Contact Resistance : 20mΩMax. at DC 100mA
 Dielectric Voltage : AC 500V for one minute
 Operation Temperature : -40°C to + 105°C



H-R-2Xxx-LF
 LEADFREE

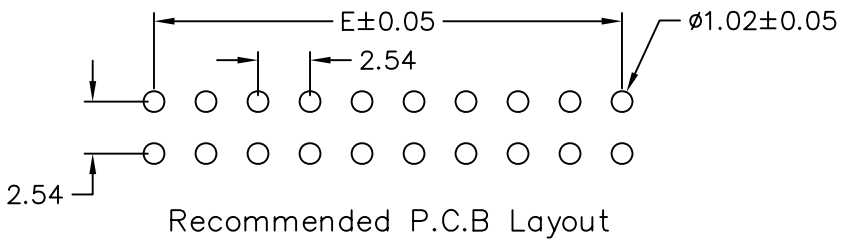
RoHS Compliant

POLES	DIM E	POLES	DIM E
		21	50.80
2	2.54	22	53.34
3	5.08	23	55.88
4	7.62	24	58.42
5	10.16	25	60.96
6	12.70	26	63.50
7	15.24	27	66.04
8	17.78	28	68.58
9	20.32	29	71.12
10	22.86	30	73.66
11	25.40	31	76.20
12	27.94	32	78.74
13	30.48	33	81.28
14	33.02	34	83.82
15	35.56	35	86.36
16	38.10	36	88.90
17	40.64	37	91.44
18	43.18	38	93.98
19	45.72	39	96.52
20	48.26	40	99.06

CODE	DIM A	DIM B	DIM C
H-R-2Xxx	6.00	3.00	3.90
H-R4-2Xxx	6.00	4.00	3.90

If you need other dimensions, please fill out Dim A/B/C or contact our sales representatives.

DIM A	DIM B	DIM C



	PART NO. H-R-2Xxx		APPROVED BY CY		TOLERANCES ARE .X ± 0.3 .XX ± 0.2 .XXX AWG	DESCRIPTION: PIN HEADER 2.54*2.54mm RIGHT ANGLE TYPE, DUAL ROWS	AREA	REVISIONS	HK	DATE
	DWG NO. H-R-2Xxx		DRAWING BY							
	FILE NO.		PROJECTION							
	UNIT / mm	SCALE 1:1								