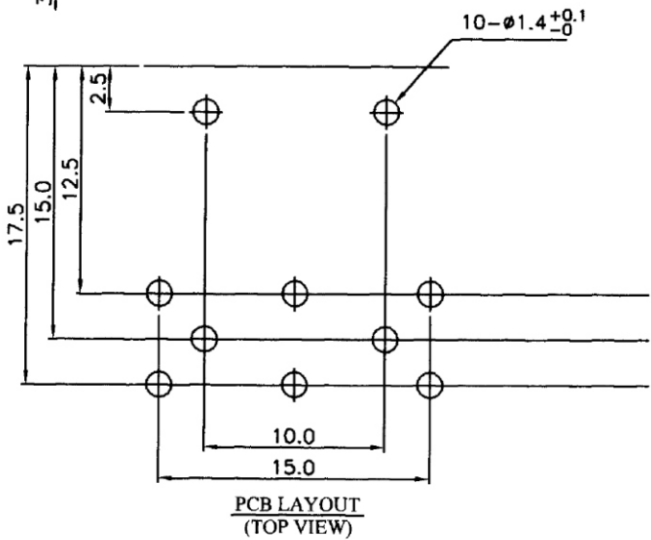


SPECIFICATIONS:

- CONTACT RESISTANCE : 20m OHM.
- INSULATION RESISTANCE : DC 500V 100M OHM MIN.
- VOLTAGE WITHSTANDING : AC 500V 1 MINUTE.
- INSERTION FORCE : 4KG MAX.
- WITHDRAWAL FORCE : 1 - 5 KG.
- LIFE TEST : 5,000 CYCLES MIN. AFTER TESTING , CONTACT RESISTANCE SHALL NOT EXCEED 100m OHM.
- CURRENT RATING : AC : 100V 2A.
DC : 24V 1A.
- Unless other specified, the tolerance is ±0.2mm

4.	CONTACT TERMINAL	8	BSR-H/2 0.7t	TIN	
3.	EARTH TERMINAL	1	PBSR 0.25t	TIN	
2.	COVER	1	P.B.T.		UL94V-0
1.	BODY	1	P.B.T.		UL94V-0
P/N	PART NAME	Q'TY	MATERIAL	PLATING	REMARKS



RoHS Compliant

TOLERANCES ARE

X, ±
.X ±
.XX ±
.XXX ±
ANG ±

DRAWING BY CY

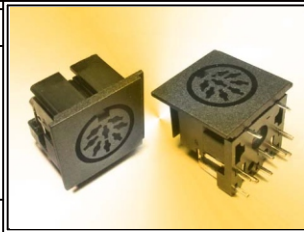
CHECKED BY GENIUS

UNIT / mm SCALE 1 : 1

DATE

SIZE A4

PJECTION



ORDER INFORMATION

DJ-SQ-08-LF
SERIES | LEADFREE
| 08 WAY
| SQUARE
ALL PLASTIC

DESCRIPTION:

MORETHANALL
PCB CONNECTORS
Cable ASSEMBLIES

煜倫股份有限公司

www.morethanall.com