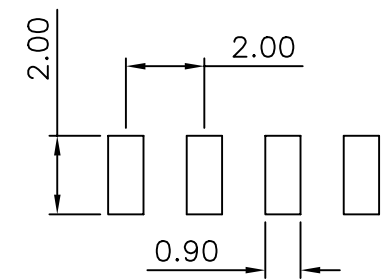
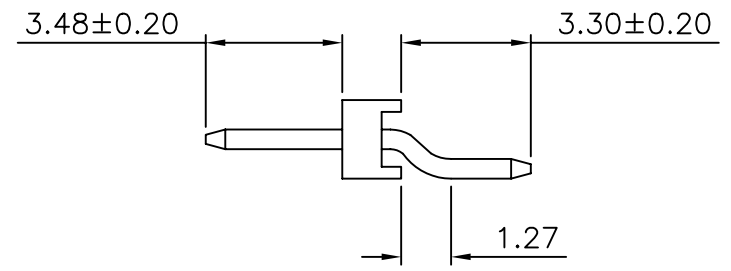


Specifications

Current Rating: 2Amp
 Insulation Resistance: 1000MΩ Min.
 Dielectric Withstanding: 500V AC/DC
 Contact Resistance: 20mΩ Max.
 Operating Temperature: -40°C to +105°C

Materials

Contact Material: Copper Alloy
 Insulation Material: Polyester, UL 94V-0
 NYLON-6T



Recommended P.C.Board

B			PART NO. M-WX-1Xxx		APPROVED BY CY	TOLERANCES ARE	DESCRIPTION: 2.0 PIN HEADER SINGLE ROW SMT TYPE BASE 1.5H				
			DWG NO. M-WX-1Xxx								
A			FILE NO. PFD102-XX-A01		DRAWING BY		.X ± 0.38 .XX ± 0.25 .XXX ± 0.13 AWG	AREA REVISIONS HK DATE			
			UNIT / mm	SCALE 1:1	PROJECTION						