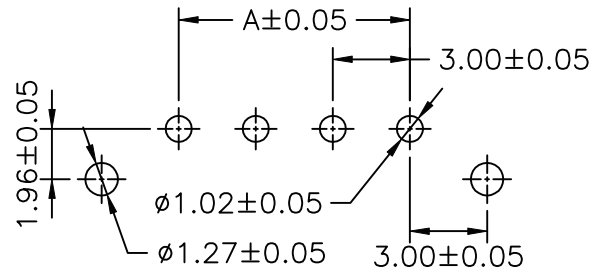
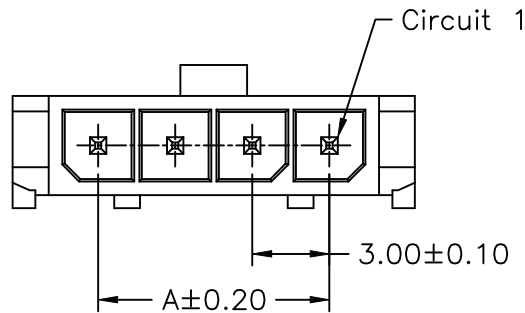
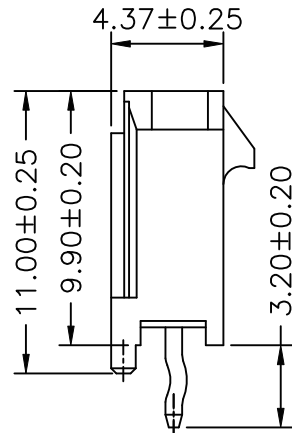
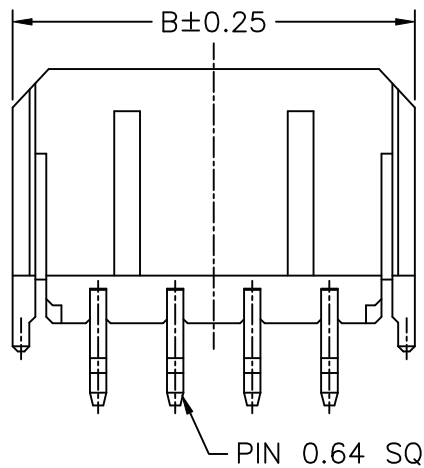


SPECIFICATIONS

Current Rating: 5A AC,DC
 Voltage Rating: 250V AC,DC
 Temperature Range: -25°C ~ +85°C
 Contact Resistance: 10mΩ Max
 Insulation Resistance: 1000MΩ Min
 Withstanding Voltage: 1500V AC/minute
 Pin Material: Brass/Tin-plated
 Material: PBT30%GF,UL94V-0



P.C.B LAYOUT



Ordering Information & Dimensions

PART NO.	Dimensions	
	A	B
MIF-PDP-1X02	3.00	9.65
MIF-PDP-1X03	6.00	12.65
MIF-PDP-1X04	9.00	15.65
MIF-PDP-1X05	12.00	18.65
MIF-PDP-1X06	15.00	21.65
MIF-PDP-1X07	18.00	24.65
MIF-PDP-1X08	21.00	27.65
MIF-PDP-1X09	24.00	30.65
MIF-PDP-1X10	27.00	33.65
MIF-PDP-1X11	30.00	36.65
MIF-PDP-1X12	33.00	39.65

RoHS Compliant

TOLERANCES ARE



煜倫股份有限公司

www.morethanall.com

DRAWING BY CY

CHECKED BY GENIUS

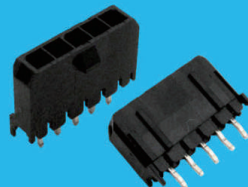
UNIT / mm SCALE 1:1

DATE

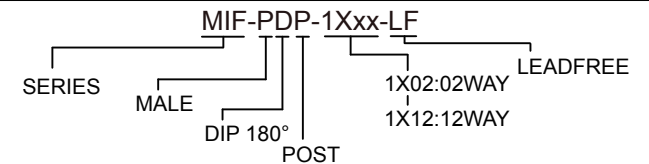
SIZE A4

PPOJECTION

X, ±
 .X ±
 .XX ±
 .XXX ±
 ANG ±



ORDER INFORMATION



DESCRIPTION: 3.00mm PITCH 180° WAFER, SINGLE ROW, MICRO-FIT