

NOTES:

***Material**

Housing: LCP,UL 94V-0 rated, Color: Black;
 Contact: Brass or Phosphor Bronze
 Plating: Gold plating over Nickel on contact area; Tin Plating on Solder Tail.
 CAV. NO:A~P , 01~32

***Mechanical**

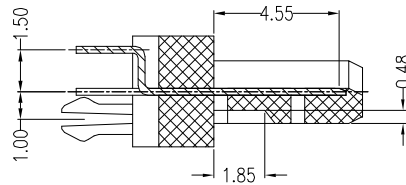
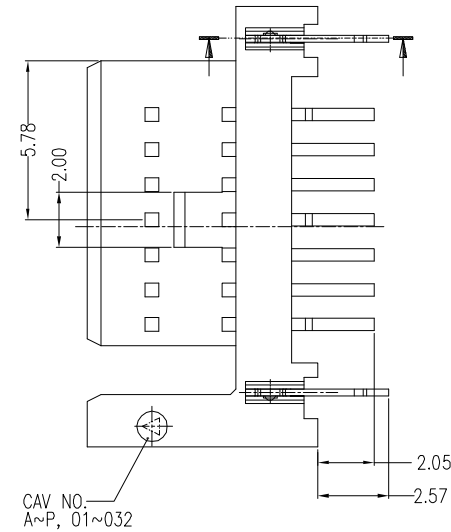
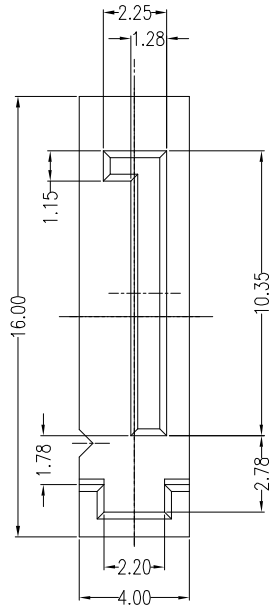
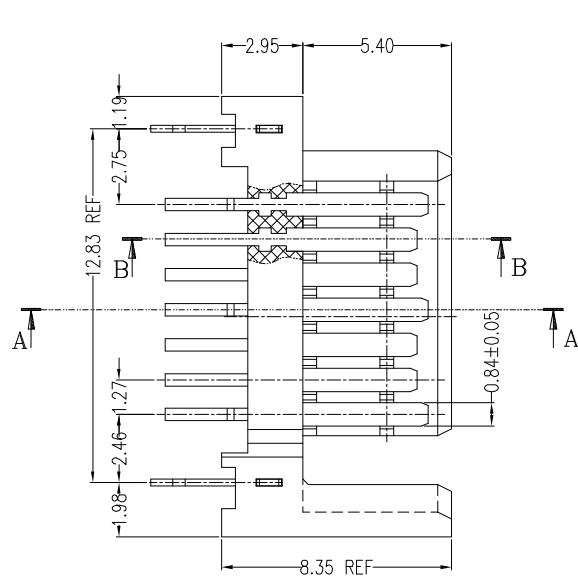
Insertion Force: 45N max.
 Withdrawal Force: 10N min.
 Durability: 500 cycles.

***Electrical Specification**

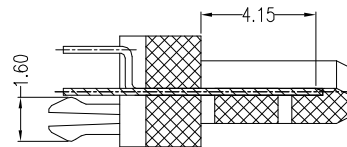
Current Rating: 1.5 Ampere per contact;
 Contact Resistance: 30 Milliohms max.
 Insulation Resistance: 1000 megohms min.
 Dielectric Withstanding Voltage: 500 V AC.

***Environmental**

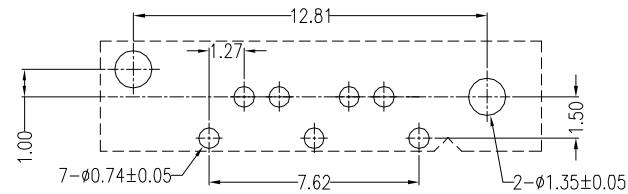
Operating Temperature: -55° C to +125° C



SECT A-A



SECT B-B



P.C.B. Layout

RoHS Compliant

TOLERANCES ARE



煜倫股份有限公司

www.morethanall.com

DRAWING BY CY

CHECKED BY GENIUS

UNIT / mm

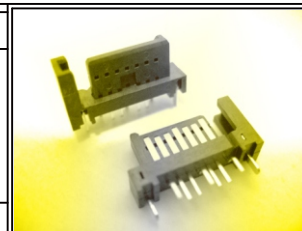
SCALE 1 : 1

DATE

SIZE A4

PJECTION

X. ±
 .X ±
 .XX ±
 .XXX ±
 ANG ±



ORDER INFORMATION

SATA-PDR15Z-07-LF

SERIES LEADFREE
 MALE 07 WAY
 DIP 180° ROW/PITCH 1.5mm
 RIGHT

DESCRIPTION: 7P Straight DIP B Type Press Metal Fork Post