

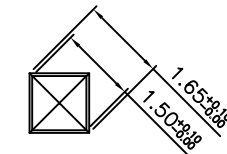
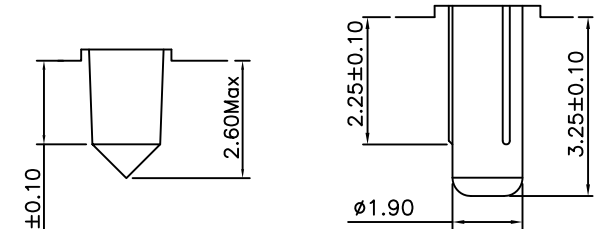
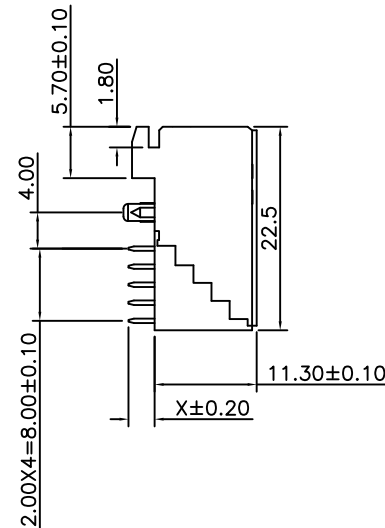
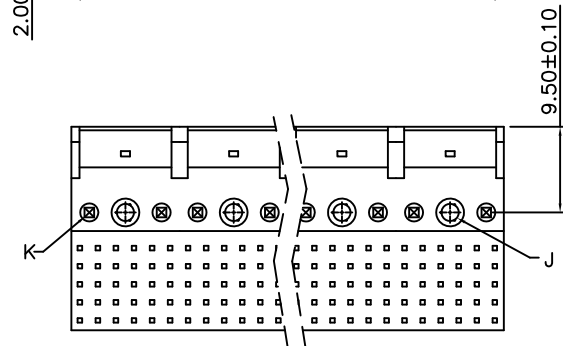
**Material:**

Housing: High Temperature Plastic UL94V-0.  
Contacts: Copper Alloy.

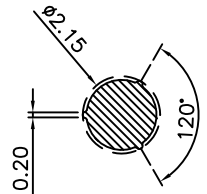
**Electrical Characteristics:**

Current Rating: 1 AMP.  
Dielectric Withstanding Voltage: AC 1000V For 1 minute.  
Insulator Resistance: 1000MΩ min. at DC 500V.  
Contact Resistance: 30mΩ max. at DC 100mA.  
Operating Temperature: -55°C ~ +125°C.

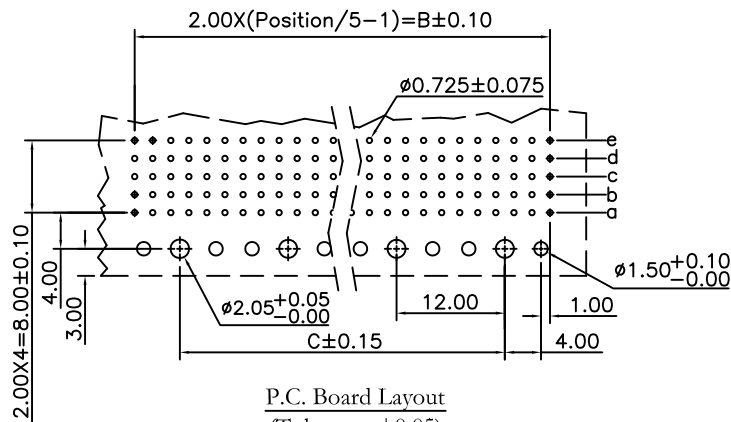
**\*RoHS Compliant**



Detail K  
(Scale 5 : 1)



Detail J  
(Scale 5 : 1)



P.C. Board Layout  
(Tolerance: ±0.05)

Position	X Length		Dimension	
	1	2	A	B
	2,90	3,53	C	
30	11,95	10	0	
60	23,95	22	12	
90	35,95	34	24	
120	47,95	46	36	
150	59,95	58	48	
180	71,95	70	60	
210	83,95	82	72	
240	95,95	94	84	
270	107,95	106	96	
300	119,95	118	108	
330	131,95	130	120	
360	143,95	142	132	
390	155,95	154	144	

**RoHS Compliant**

TOLERANCES ARE



煜倫股份有限公司

www.morethanall.com

DRAWING BY CY

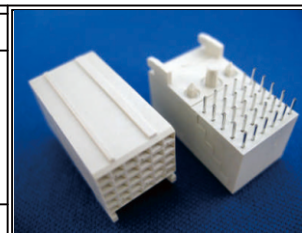
CHECKED BY GENIUS

UNIT / mm SCALE 1 : 1

DATE

SIZE A4 PPROJECTION

X, ± 0.50  
X, ± 0.25  
.XX, ± 0.15  
.XXX, ±  
ANG, ±



**ORDER INFORMATION**

FUB-SRxx-5Xxx-LF  
SERIES LEADFREE  
5X06:30WAY  
FEMALE 5X78:390WAY  
DIP 90° 02:2.90mm  
03:3.53mm

DESCRIPTION: