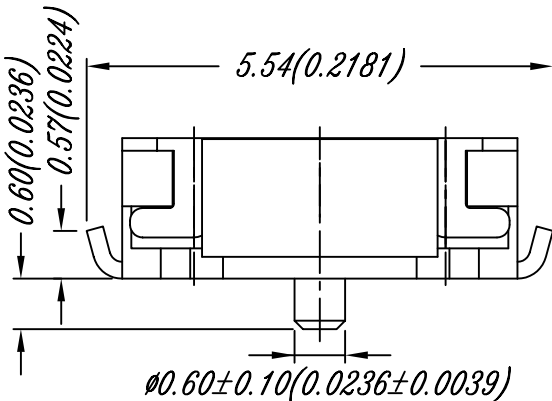


P.C.B. LAYOUT



**NOTE:**

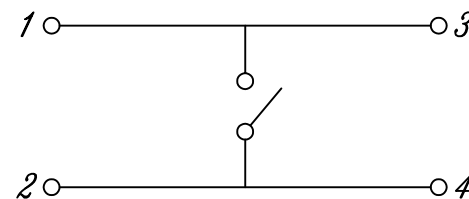
1. ALL DIMENSIONS ARE IN MILLIMETERS, BRACKETED DIMENSIONS ARE IN INCHES.
2. GENERAL TOLERANCES MAX.±0.20mm.

(1) 220GF<+80GF-70GF>

(2) RATED VOLTGE; DC 12V 50mA

TRAVEL; 0.25mm+/-0.1mm

CONTACT RESISTANCE; 100m Ohm max.



CIRCUIT DIAGRAM

**MORETHANALL**  
CONNECTORS  
ASSEMBLIES

PART NO. TSW34-W16PR-220

DWG NO. TSW34-W16PR-220

FILE NO.

UNIT / mm

SCALE 1:1

CHECKED BY CY

DRAWING BY

PROJECTION

TOLERANCES ARE

.X ± 0.2  
.XX ±  
.XXX ±  
AWG

DESCRIP TION:

**TINY SIDE PUSH SWITCH (4. 7X3. 5)**  
**(MECHANICAL CONTACT TYPE)**

AREA

REVISIONS

HK

DATE

煜倫股份有限公司