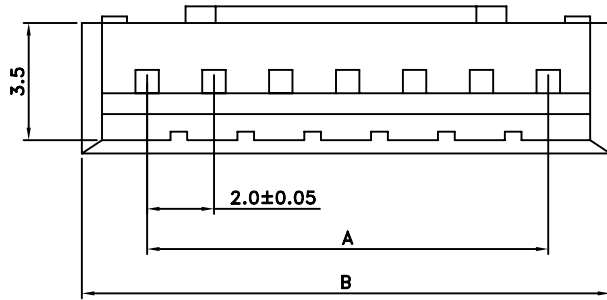
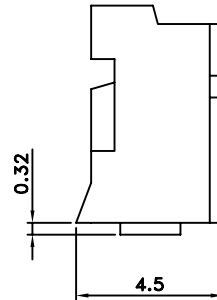
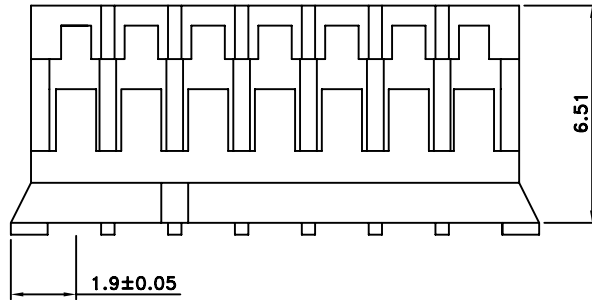


**SPECIFICATION**

CURRENT RATING: 2A AC,DC  
 VOLTAGE RATING: 250V AC,DC  
 TEMPERATURE RANGE: -25°C TO +85°C  
 (INCLUDING TEMPERATURE RISE)  
 CONTACT RESISTANCE: INITIAL VALUE/10M OHM MAX.  
 AFTER ENVIRONMENTAL TESTING/20M OHM MAX.  
 INSULATION RESISTANCE: 1,000M OHM MIN.  
 WITHSTANDING VOLTAGE: 800V AC/MINUTE  
 MATERIAL AND FINISH  
 HOUSING: NYLON 66,UL94V-0



PH-H-xx-LF  
 LEADFREE  
 RoHS Compliant



| CIRCUITS | DIM.A | DIM.B |
|----------|-------|-------|
| 2        | 2.00  | 5.80  |
| 3        | 4.00  | 7.80  |
| 4        | 6.00  | 9.80  |
| 5        | 8.00  | 11.80 |
| 6        | 10.00 | 13.80 |
| 7        | 12.00 | 15.80 |
| 8        | 14.00 | 17.80 |
| 9        | 16.00 | 19.80 |
| 10       | 18.00 | 21.80 |
| 11       | 20.00 | 23.80 |
| 12       | 22.00 | 25.80 |
| 13       | 24.00 | 27.80 |
| 14       | 26.00 | 29.80 |
| 15       | 28.00 | 31.80 |



|                  |           |                |  |  |  |    |      |
|------------------|-----------|----------------|--|--|--|----|------|
| PART NO. PH-H-xx |           | APPROVED BY CY |  | TOLERANCES ARE<br>X.<br>XX.<br>XXX.<br>AWG | DESCRIP TION: <b>2.0MM PITCH HOUSING</b> |    |      |
| DWG NO. PH-H-xx  |           | DRAWING BY     |  |  |  |    |      |
| FILE NO.         |           | PROJECTION     |  | AREA                                       | REVISIONS                                | HK | DATE |
| UNIT / mm        | SCALE 1:1 |                |  |  |  |    |      |

煜倫股份有限公司