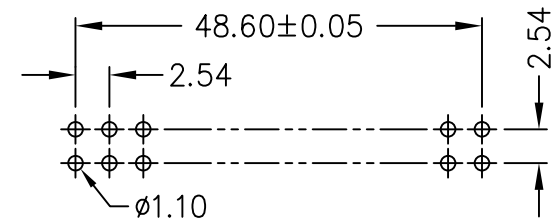
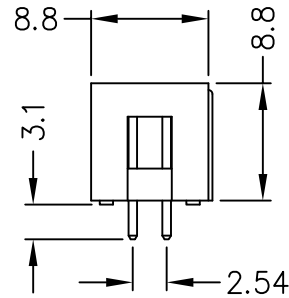
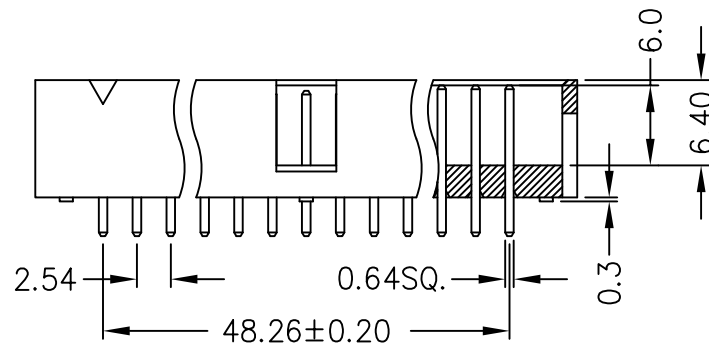
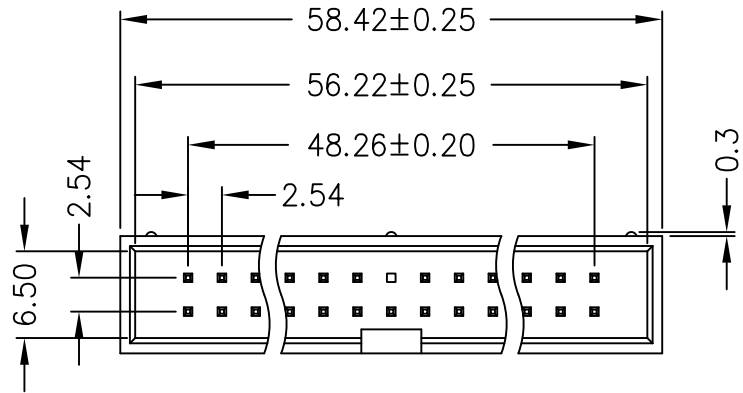


Material:

1. Insulator: PBT+30% Glass Fiber(Meet UL94V-0).
2. Contact: Copper Alloy.
3. Contact Plated: Gold or Tin over Nickel Plated.

Specification:

1. Current Rating: 1 Amp.
2. Withstanding Voltage: AC 500V for 1 Minute.
3. Insulation Resistance: 1000MΩ Min. at DC 500V.
4. Contact Resistance: 15mΩ Max..
5. Operating Temperature: -40°C~+105°C.



Recommend P.C.B. Layout

RoHS Compliant

TOLERANCES ARE

MORETHANALL
PCB CONNECTORS
Cable ASSEMBLIES

DRAWING BY CY

CHECKED BY GENIUS

UNIT / mm

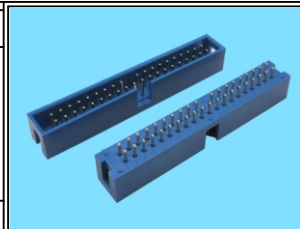
SCALE 1 : 1

DATE

SIZE A4

P PROJECTION

X.±
.X±
.XX±
.XXX±
ANG±



ORDER INFORMATION

B-DBL-40E20-LF
SERIES | LEADFREE
EMPTY#20
40 WAY
BLUE
DIP 180°

煜倫股份有限公司

www.morethanall.com

DESCRIPTION: 2.54mm BOX HEADER STRAIGHT TYPE