

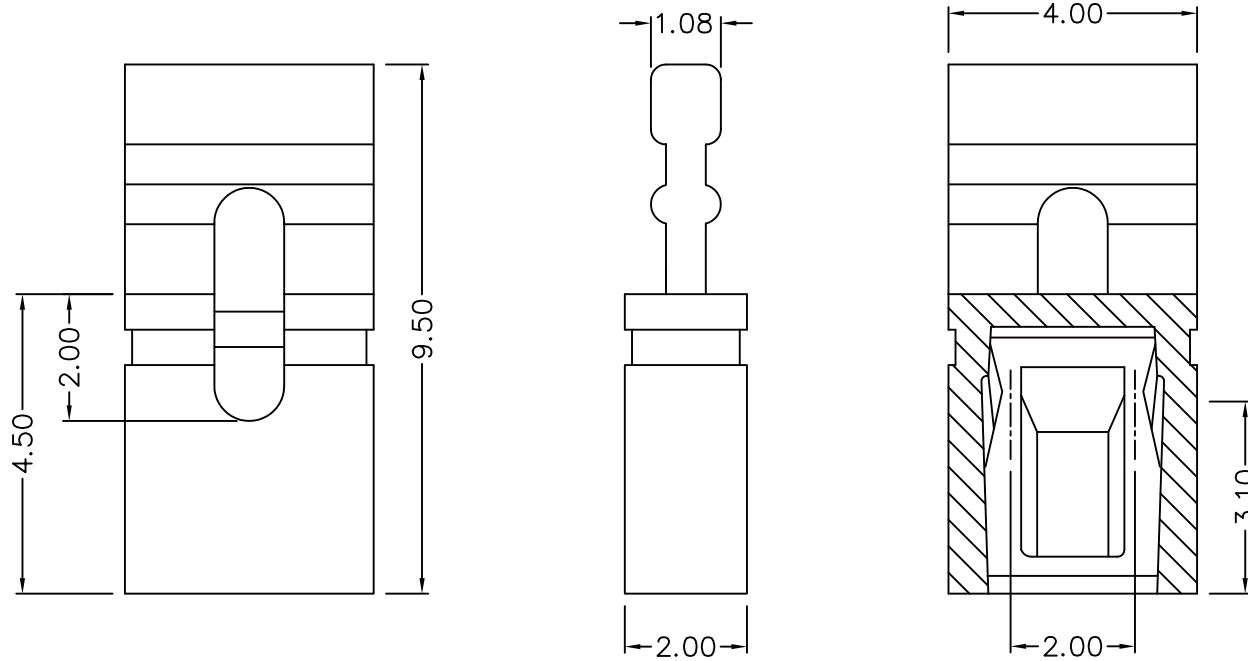
MATERIAL

Insulator : NYLON 66 94V-2
 Black Insulator

Contact Pin : Phosphor Bronze
 Contact Plating: Gold Plated

SPECIFICATION

Current Rate : 3 AMP MAX
 Insulation Resistance : 1000 meegohms MAX
 Contact Resistance : 30mΩ Max.
 Dielectric Voltage : AC 650 volts RMS at sea level



RoHS Compliant

TOLERANCES ARE

MORETHANALL
 PCB CONNECTORS
 Cable ASSEMBLIES

煜倫股份有限公司

www.morethanall.com

DRAWING BY CY

CHECKED BY GENIUS

UNIT/ mm

SCALE 1:1

DATE

SIZE A4

PJECTION

X, ±
 .X ±
 .XX ±
 .XXX ±
 ANG ±



ORDER INFORMATION

SJ-H-04-LF
 SERIES | LEADFREE
 HIGH 4.50mm
 HANDLE

DESCRIPTION: