

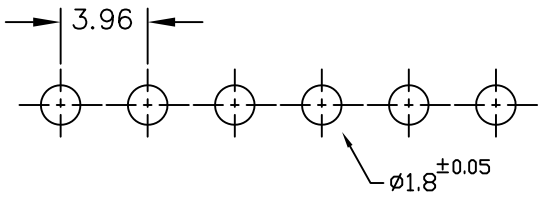
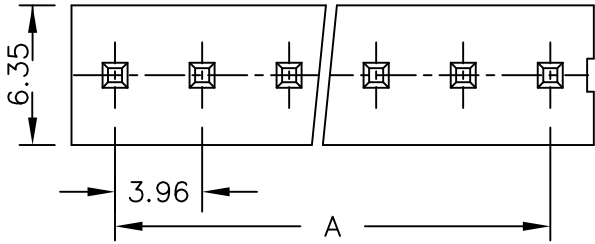
# SPECIFICATIONS

## Electrical

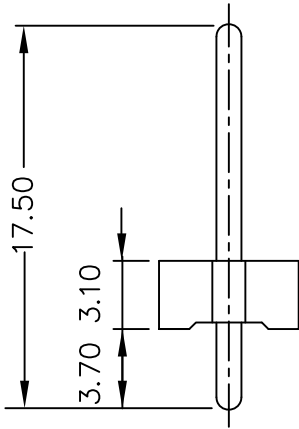
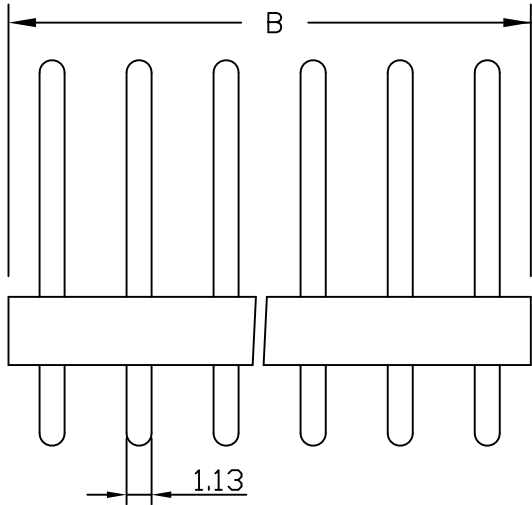
Current Rating: 5A AC, DC  
 Voltage Rating: 250V AC, DC  
 Operating Temp.: -25°C ~ +85°C  
 Insulation Resistance: 1000MΩ/ min.  
 Dielectric Withstanding Voltage: 1500V AC/ min.  
 Contact Resistance: 10mΩ/ max.

## Material

Material: Nylon66, UL94V-2



PCB LAYOUT COMPONENT SIDE



Poles	Dimension mm (in.)		Part No.	Note.
	A	B		
2	3.96	8.00	KXR-D-02	
3	7.92	12.00	KXR-D-03	
4	11.88	15.90	KXR-D-04	
5	15.84	20.00	KXR-D-05	
6	19.80	24.00	KXR-D-06	
7	23.76	27.90	KXR-D-07	
8	27.72	31.90	KXR-D-08	
9	31.68	35.80	KXR-D-09	
10	35.64	39.90	KXR-D-10	
11	39.60	43.90	KXR-D-11	
12	43.56	47.70	KXR-D-12	
13	47.52	51.80	KXR-D-13	
14	51.48	55.70	KXR-D-14	
15	55.44	59.70	KXR-D-15	
16	59.40	63.80	KXR-D-16	

RoHS Compliant

TOLERANCES ARE

**MORETHANALL**  
 PCB CONNECTORS  
 Cable ASSEMBLIES

DRAWING BY CY

CHECKED BY GENIUS

UNIT / mm

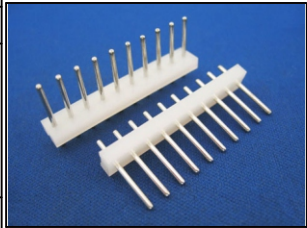
SCALE 1 : 1

DATE

SIZE A4

PJECTION

X. ±  
 .X ±  
 .XX ±  
 .XXX ±  
 ANG ±



ORDER INFORMATION

KXR-D-xx-LF  
 SERIES | LEADFREE  
 02~16 WAY  
 DIP 180°

煜倫股份有限公司

www.morethanall.com

DESCRIPTION: 3.96mm Wire-to-Board Header Dip 180° Type