

### Features:

- 2 ~ 24 circuits available
- Material: UL 94V-0 or 94V-2
- Positive housing locks
- Recommended PCB thickness: .07"(1.78mm) Max.

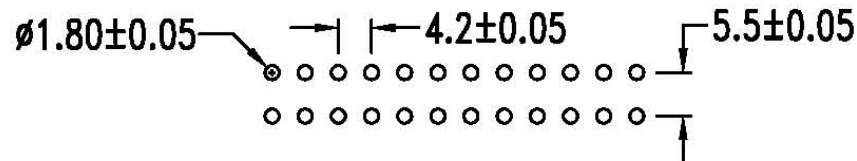
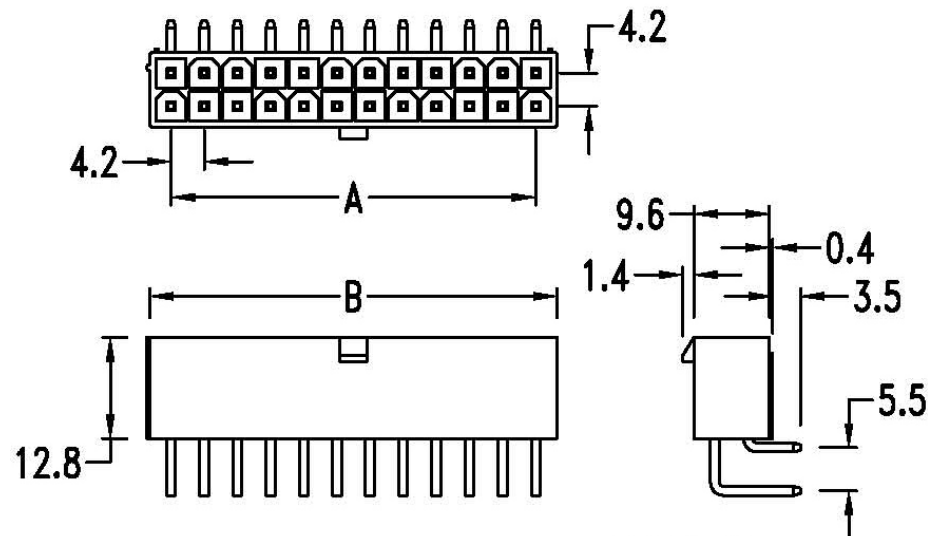
### Specifications:

- Voltage rating: 600V AC, DC (R.M.S.)
- Contact resistance: 10mΩ Max.
- Dielectric withstanding voltage: 1500V AC/minute
- Ambient temperature range: -40 °C ~ 105 °C  
(including temperature rise)

### Ordering and Dimensional Information ( mm )

Circuits	Dim. A	Dim. B	Circuits	Dim. A	Dim. B	Circuits	Dim. A	Dim. B
2		5.4	10	16.8	22.2	18	33.6	39.0
4	4.2	9.6	12	21.0	26.4	20	37.8	43.2
6	8.4	13.8	14	25.2	30.6	22	42.0	47.4
8	12.6	18.0	16	29.4	34.8	24	46.2	51.6

MF-PRX-2Xxx-LF  
LEADFREE  
RoHS Compliant



P. C. B . hole dimensions

### • Current rating and wire size:

Wire Size AWG	Circuits			
	2	4, 6	8, 10	12~24
# 18	9 A	8 A	7 A	6 A
# 20	7 A	6 A	5 A	5 A
# 22	5 A	4 A	4 A	4 A
# 24	4 A	3 A	3 A	3 A



PART NO. MF-PRX-2Xxx

DWG NO. MF-PRX-2Xxx

FILE NO.

UNIT / mm

SCALE 1:1

CHECKED BY CY

DRAWING BY

PROJECTION

TOLERANCES ARE

.X ± 0.2  
.XX ± 0.1  
.XXX ±  
AWG

DESCRIPTION:

AREA

REVISIONS

HK

DATE

煜倫股份有限公司