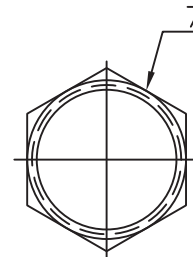
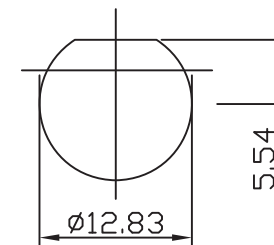


LOCK WASHER



1/2-28UNEF-2B  
CLAMP NUT



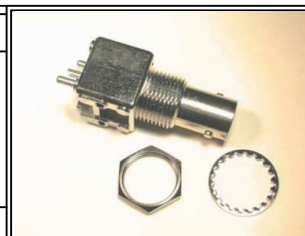
RECOMMENDED MOUNTING HOLE  
MAXIMUM PANEL THICKNESS:5.5MM  
RECOMMENDED MOUNTING TORQUE:  
12 INCH-POUNDS MAX

NO	DESCRIPTION	MATERIAL	FINISH	QTY
7	NUT	BRASS	NICKEL	1
6	WASHER	PHOSPHOR BRONZE	NICKEL	1
5	SOLDER TAIL	BRASS WIRE	TIN LEAD	1
4	MOUNTING POST	BRASS	TIN LEAD	1
3	INSULATOR	PE-606	NONE	1
2	BODY	ZINC ALLOY	NICKEL	1
1	CENTER CONTACT	PHOSPHOR BRONZE	GOLD	1

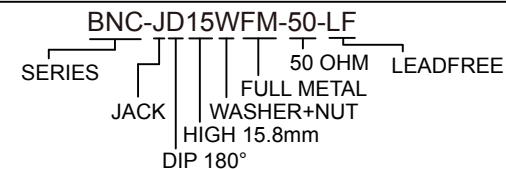
RoHS Compliant

TOLERANCES ARE

0.5-5	±0.2
6-30	±0.4
30-120	±0.6
120-315	±1
315-1000	±1.6
1000-2000	±2.4



ORDER INFORMATION



DESCRIPTION: 50ΩBNC VERTICAL PCB MOUNT  
JACK METAL BODY(HIGH PROFILE)

**MORETHANALL**  
PCB CONNECTORS  
Cable ASSEMBLIES

煜倫股份有限公司

www.morethanall.com

DRAWING BY CY

CHECKED BY GENIUS

UNIT/mm SCALE 1:1

DATE

SIZE A4

PJECTION