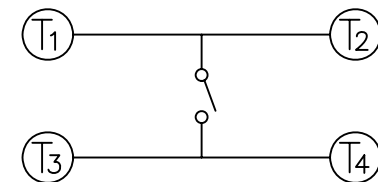
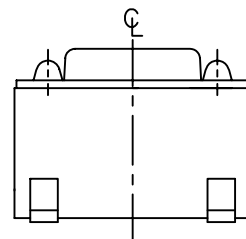
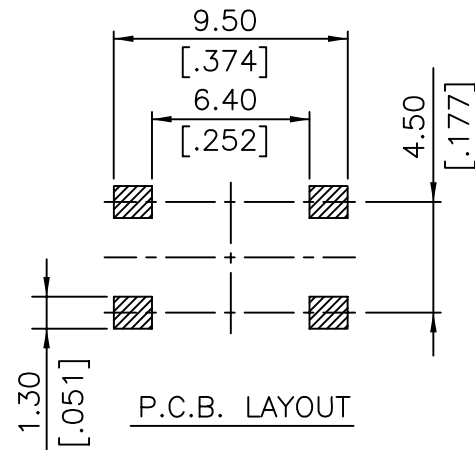
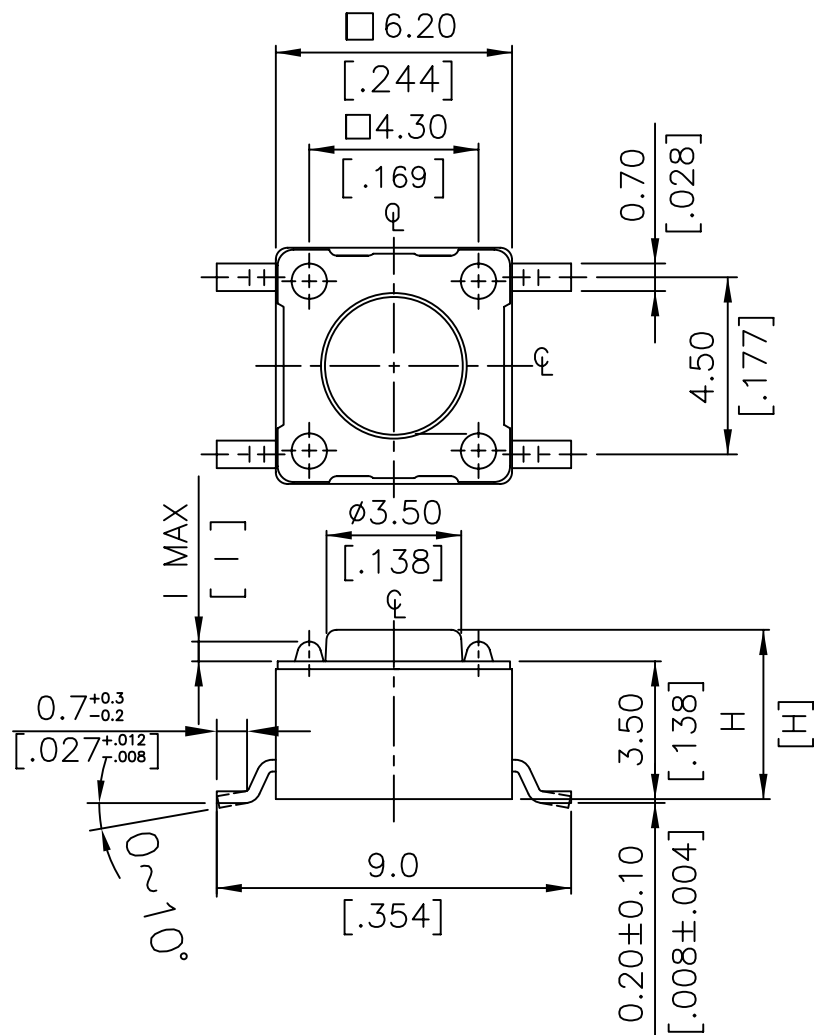


NOTE:

1. ALL DIMENSIONS ARE IN MILLIMETERS, BRACKETED DIMENSIONS ARE IN INCHES.
2. GENERAL TOLERANCES MAX.±0.20mm.



CIRCUIT DIAGRAM

TSW66-V130-xxx	13.0[.512]	0.6 MAX
TSW66-V095-xxx	9.5[.374]	0.6 MAX
TSW66-V070-xxx	7.0[.275]	0.6 MAX
TSW66-V050-xxx	5.0[.197]	0.6 MAX
TSW66-V043-xxx	4.3[.169]	0.5 MAX
PROD.	NO.	H I

RoHS Compliant

TOLERANCES ARE

MORETHANALL
PCB CONNECTORS
Cable ASSEMBLIES

DRAWING BY CY

CHECKED BY GENIUS

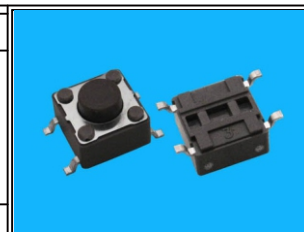
UNIT / mm SCALE 1 : 1

DATE

SIZE A4

P PROJECTION

X.±
X.±
.XX±
.XXX±
ANG±



ORDER INFORMATION

TSW66-Vxxx-xxx-LF

SERIES 180°SMT LEADFREE

043:4.3mmHIGH	100:100g (BLACK)
050:5.0mmHIGH	160:160g (BROWN)
095:9.5mmHIGH	260:260g (RED)
130:13.0mmHIGH	320:320g (SALMON)
	520:520g (YELLOW)

DESCRIPTION: TACTILE SWITCH SMT TYPE

煜倫股份有限公司

www.morethanall.com