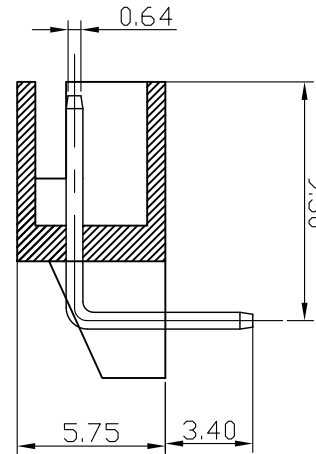
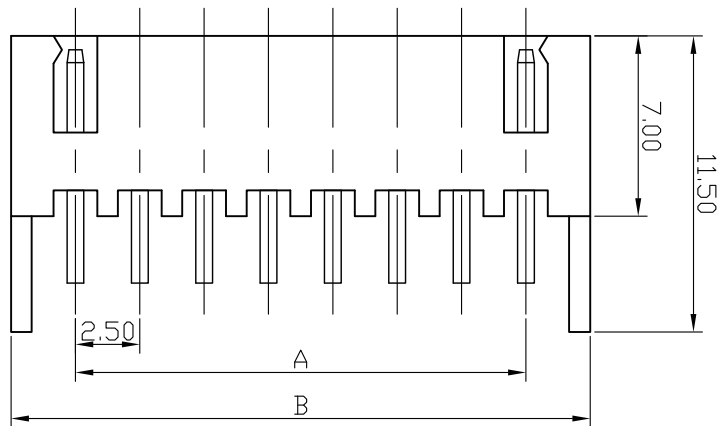


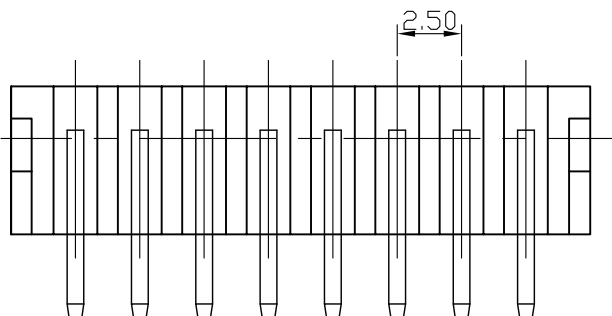
RECOMMENDED P.C.BOARD HOLE DIMM.

Specifications

Current Rating: 3A AC, DC
 Voltage Rating: 250V AC Maximum
 Operating Temp: -25°C ~ +85°C
 Contact Resistance: 10m Ω Max
 Insulation Resistance: 1000M Ω Min
 Terminal Material: Brass/Tin-plated
 Material: Nylon 66, UL94V-0+GF



Poles	Dimension mm (in.)		Part No.	Note.
	A	B		
2	2.50 (0.098)	7.50 (0.295)	XH-R-02	
3	5.00 (0.197)	10.00 (0.394)	XH-R-03	
4	7.50 (0.295)	12.50 (0.492)	XH-R-04	
5	10.00 (0.394)	15.00 (0.591)	XH-R-05	
6	12.50 (0.492)	17.50 (0.689)	XH-R-06	
7	15.00 (0.591)	20.00 (0.787)	XH-R-07	
8	17.50 (0.689)	22.50 (0.886)	XH-R-08	
9	20.00 (0.787)	25.00 (0.984)	XH-R-09	
10	22.50 (0.886)	27.50 (1.802)	XH-R-10	
11	25.00 (0.984)	30.00 (1.181)	XH-R-11	
12	27.50 (1.802)	32.50 (1.280)	XH-R-12	



RoHS Compliant

TOLERANCES ARE

MORETHANALL
 PCB CONNECTORS
 Cable ASSEMBLIES

煜倫股份有限公司

www.morethanall.com

DRAWING BY CY

CHECKED BY GENIUS

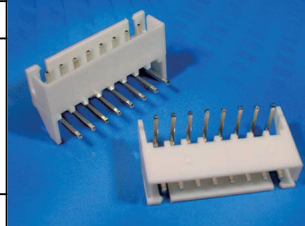
UNIT/mm SCALE 1:1

DATE

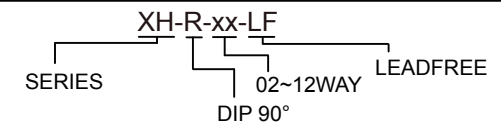
SIZE A4

PJECTION

X, \pm
 .X, \pm
 .XX, \pm
 .XXX, \pm
 ANG, \pm



ORDER INFORMATION



DESCRIPTION: 2.5mm Wire-to-Board Header DIP 90° Type