

NOTES:

1. MATERIALS:

HOUSING IS HIGH TEMPERATURE PLASTIC
 TERMINAL IS BERRIUM COPPER

Plating: Nickel 1.27 um min. over all
 Tin-Lead 3.05 um min. on solder tail
 4: Au 0.076 um min. on contact

Plating (for Lead Free):

Nickel 1.27 um min. over all
 Pure Tin 3.05 um min. on solder tail
 A:3 um Gold on contact for Lead Free

▲ 3:3u" Gold over all For Lead Free

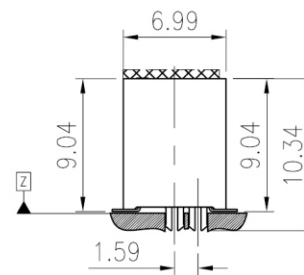
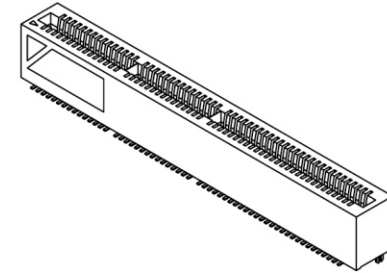
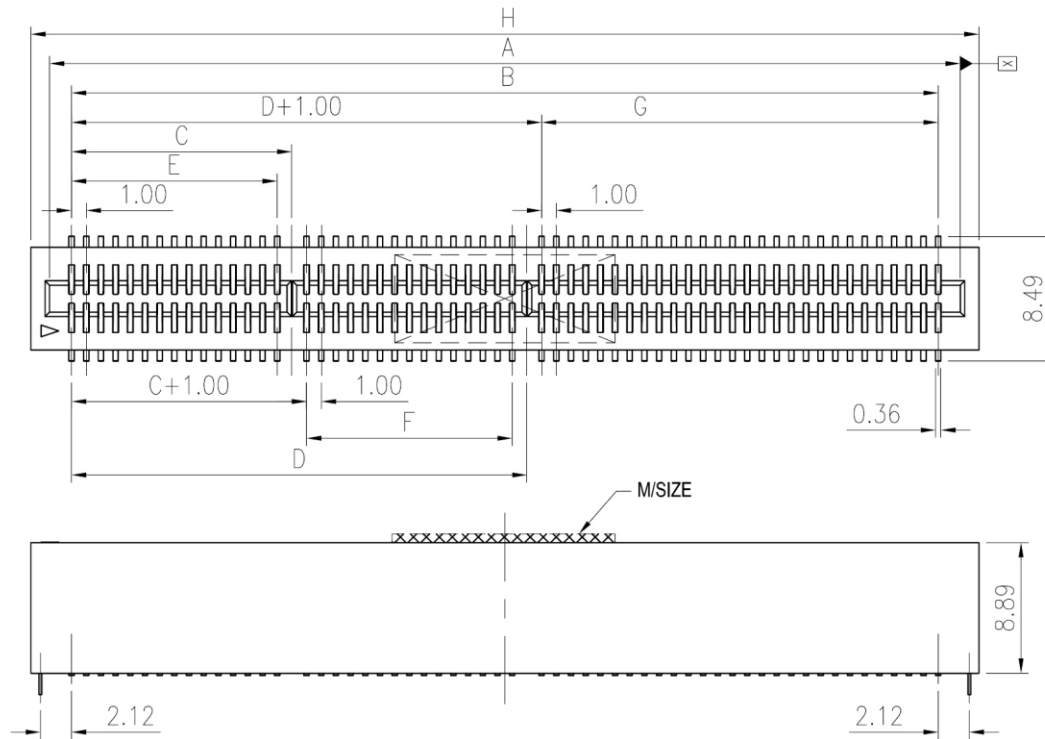
FITTING NAIL IS BRASS

Plating: Nickel 1.27 um min. over all

- COPLANARITY IS 0.1mm MAX. BASE ON DATUM Z
- TRUE POSITION IS 0.1mm MAX. BASE ON DATUM X

E10-VZC-xxx-LF
 CAP LEADFREE
BOARDLOCK
RoHS Compliant

P/N	CKTS	DIM A	DIM B	DIM C	DIM D	DIM E	DIM F	DIM G	DIM H	M/size	POSITION POLARIZED
E10-VZC-010	10	7.00	4.00	1.00	N/A	N/A	N/A	N/A	9.54	W3T12	2,3
E10-VZC-016	16	10.00	7.00	2.00	N/A	1.00	N/A	N/A	12.54	W3T12	5,6
E10-VZC-040	40	22.00	19.00	7.00	N/A	6.00	N/A	N/A	24.54	W6T12	15,16
E10-VZC-060	60	32.00	29.00	10.00	N/A	9.00	N/A	N/A	34.54	WAT12	21,22
E10-VZC-080	80	42.00	39.00	15.00	N/A	14.00	N/A	N/A	44.54	WAT12	31,32
E10-VZC-100	100	52.00	49.00	20.00	N/A	19.00	N/A	N/A	54.54	WAT12	41,42
E10-VZC-120	120	62.00	59.00	15.00	31.00	14.00	14.00	27.00	64.54	WFT12	31,32 63,64
E10-VZC-140	140	72.00	69.00	26.00	57.00	25.00	29.00	11.00	74.54	WFT12	53,54 115,116



PART NO. **E10-VZC-xxx**

DWG NO. **E10-VZC-xxx**

FILE NO.

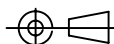
UNIT / mm

SCALE 1:1

CHECKED BY CY

DRAWING BY

PROJECTION



TOLERANCES ARE

.X ± 0.2
 .XX ±
 .XXX ±
 AWG

DESCRIPTION:

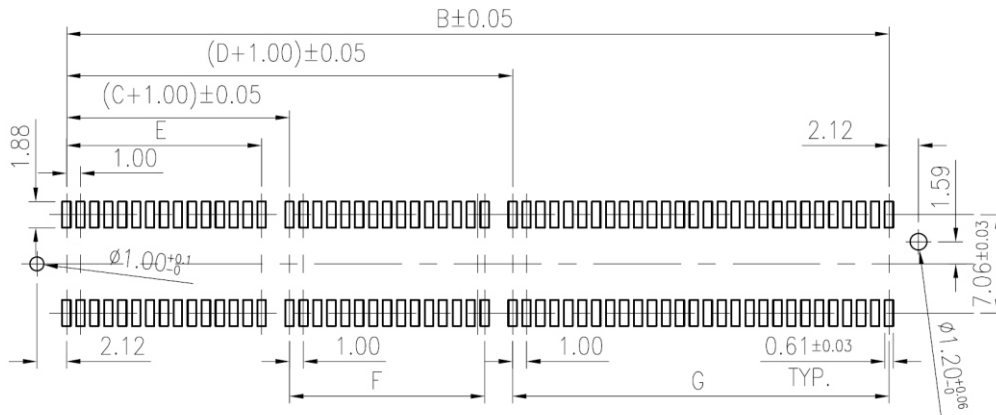
AREA

REVISIONS

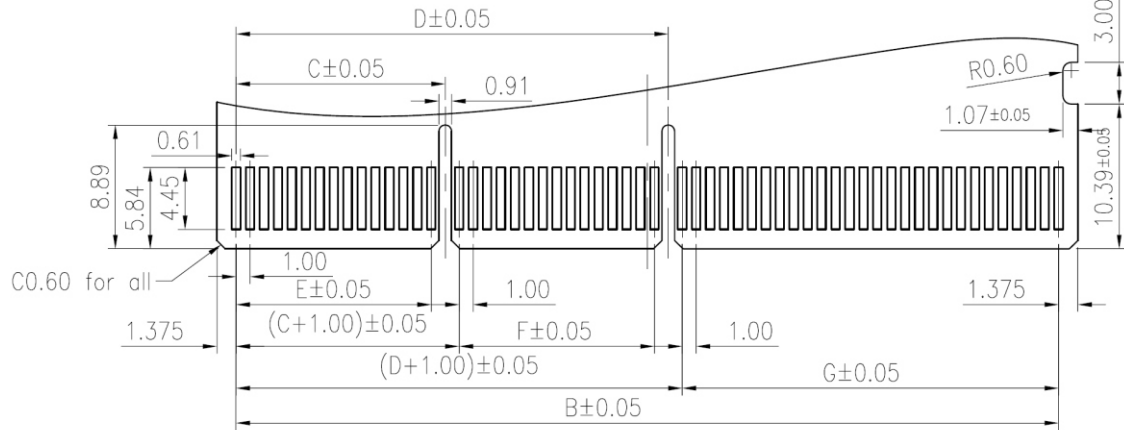
HK

DATE

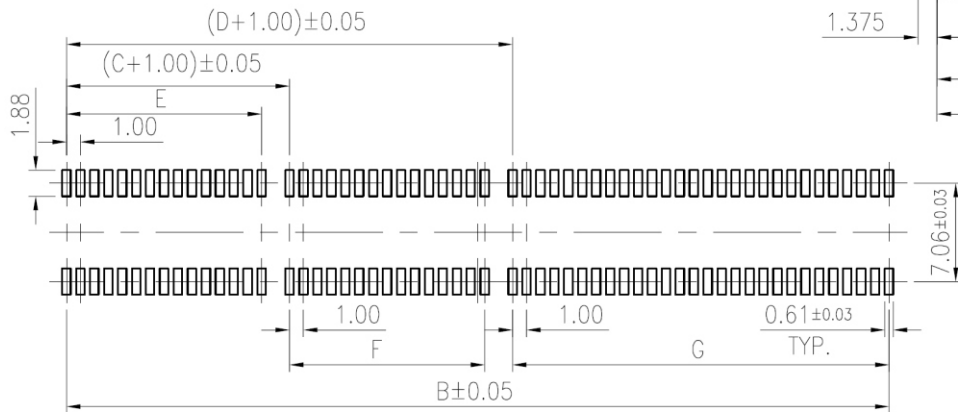
煜倫股份有限公司



RECOMMENDED SMT PCB LAYOUT



RECOMMENDED CARD PCB LAYOUT



△ NONE BOSS RECOMMENDED SMT PCB LAYOUT



PART NO. **E10-VZC-xxx**

DWG NO. **E10-VZC-xxx**

FILE NO.

UNIT / mm

SCALE 1:1

CHECKED BY CY

DRAWING BY

PROJECTION

TOLERANCES ARE

.X ± 0.2

.XX ±

.XXX ±

AWG

DESCRIPTION:

AREA

REVISIONS

HK

DATE

煜倫股份有限公司