

SIMM Socket, Pitch 1.27mm
 Plastic Post, Type 5
Physical:

Housing: LCP Or NY, UL 94V-0

Contact: Copper Alloy

Specifications:

Current Rating: 1A.

Insulation Resistance: 1000M ohm min

Contact Resistance: 30m ohm max

Dielectric Withstanding Voltage:

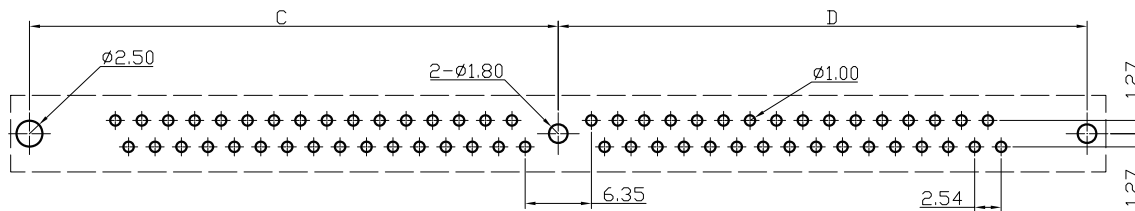
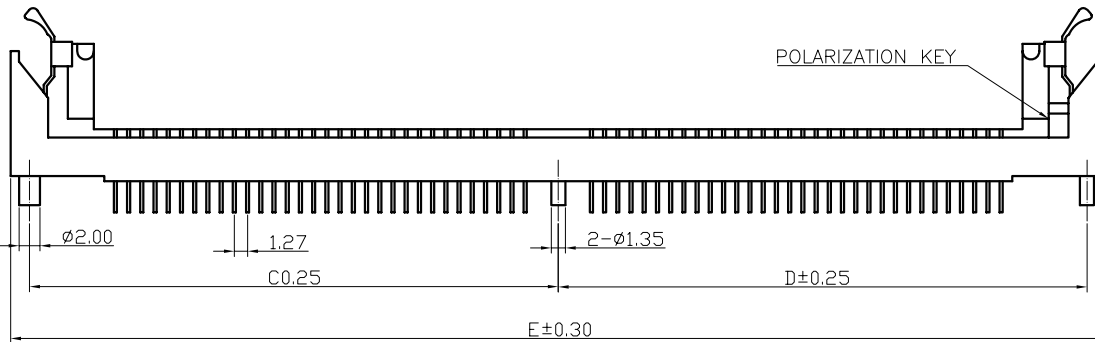
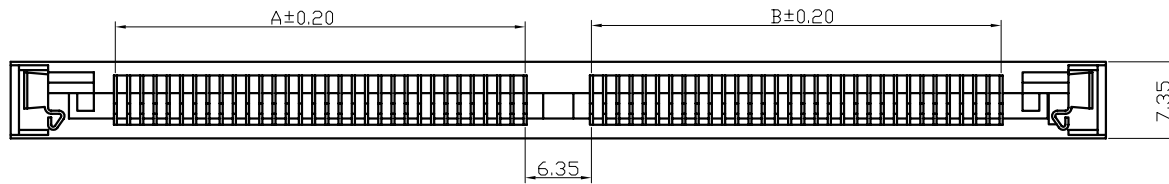
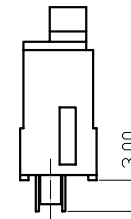
AC 500V For 1 Minute

Temperature Rating: -55°C To +105°C

Wave Soldering temperature:

Lead Part: 245±5°C, 5sec

RoHS Part: 260±5°C, 5sec



TOP VIEW
 PCB LAYOUT RECOMMENDED

PINS	A	B	C	D	E
64	39.37	39.37	50.80	50.80	105.23
68	41.90	41.90	53.34	53.34	110.31
72	44.45	44.45	55.78	55.78	115.45
80	49.53	49.53	60.90	60.90	125.75

RoHS Compliant

TOLERANCES ARE

MORETHANALL
 PCB CONNECTORS
 Cable ASSEMBLIES

煜倫股份有限公司

www.morethanall.com

DRAWING BY CY

CHECKED BY GENIUS

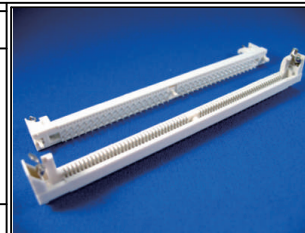
UNIT/mm SCALE 1:1

DATE

SIZE A4

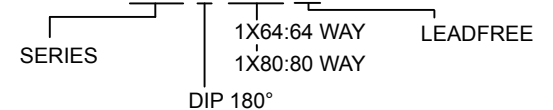
X. ±
 .X ±
 .XX ±
 .XXX ±
 ANG ±

PJECTION



ORDER INFORMATION

HSM-D-1Xxx-LF



DESCRIPTION: