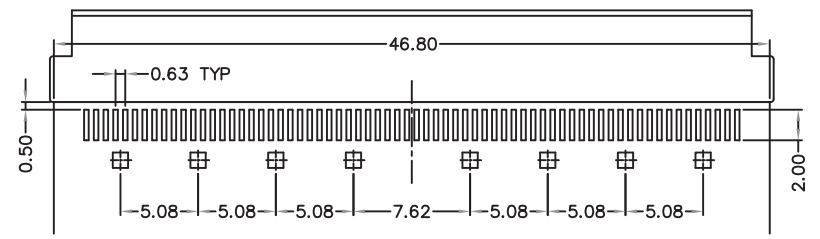
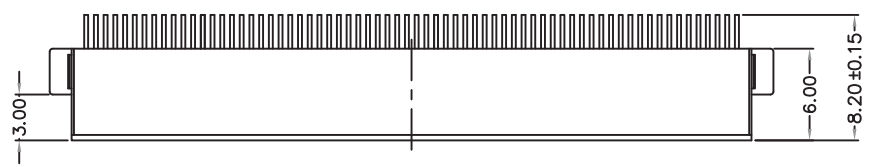
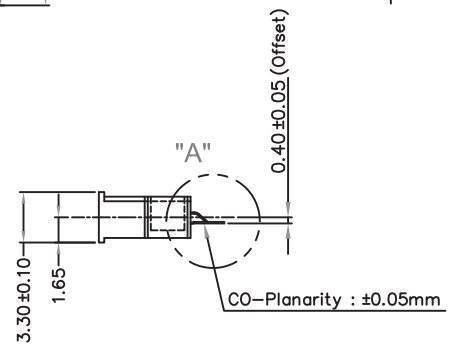
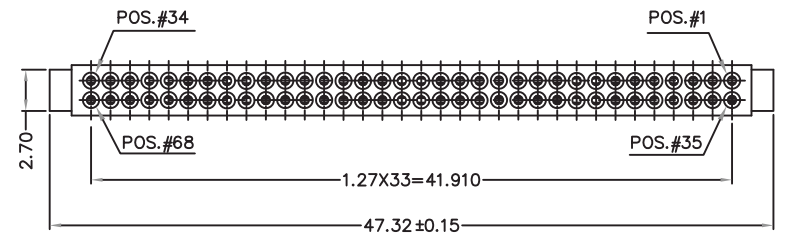


1 2 3 4 5 6 7 8 9 0

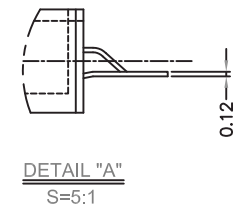
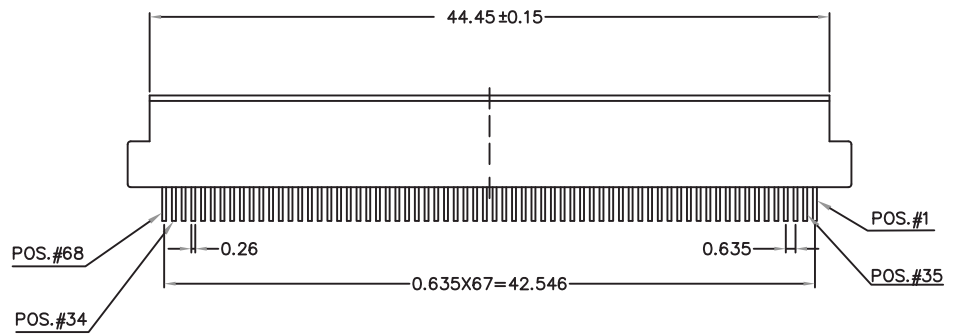
J  
I  
H  
G  
F  
E  
D  
C  
B  
A



Recommend PCB Layout



- Note
- Material:
    - Contact-Copper Alloy
    - Grounding Plate-Copper Alloy
    - Housing- High Temp Thermoplastic LCP (UL 94V-0)
  - Plating:
    - Underplate : 30u"(0.76um)Nickel
    - Solder Tails : 100u"(2.54um)Tin
  - Electrical:
    - Current Rating : 0.5A
    - Insulation Resistance :  $>1 \times 10^9$  ohm at 500 Vdc
    - $>1 \times 10^8$  ohm at 500 Vdc after Enviromental Conditioning
    - Withstanding Voltage : 500 Vrms at Sea Level
  - Enviromental:
    - Temperature Rating : -10°C to +70°C



PCC-SWA04M-68-LF  
LEADFREE

RoHS Compliant

**MORETHANALL**  
CONNECTORS  
ASSEMBLIES

PART NO. PCC-SWA04M-68

DWG NO. PCC-SWA04M-68

CHECKED BY CY

TOLERANCES ARE

DESCRIP TION:

PC Card 68 pin connect

煜倫股份有限公司

FILE NO.

DRAWING BY

.X ± 0.2  
.XX ±  
.XXX ±  
AWG

AREA

REVISIONS

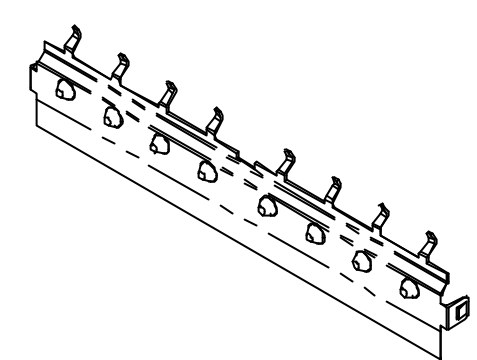
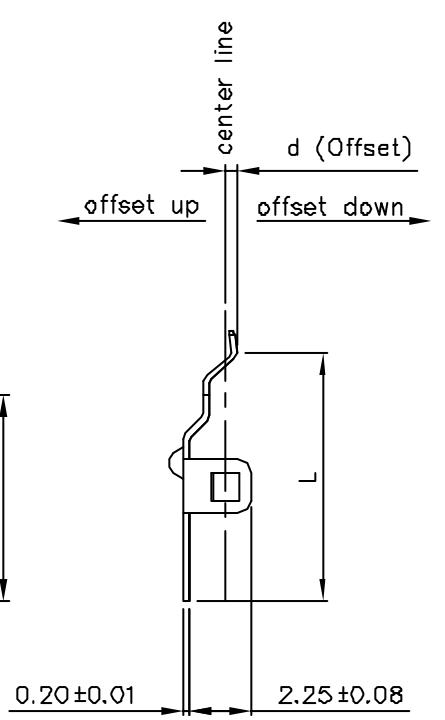
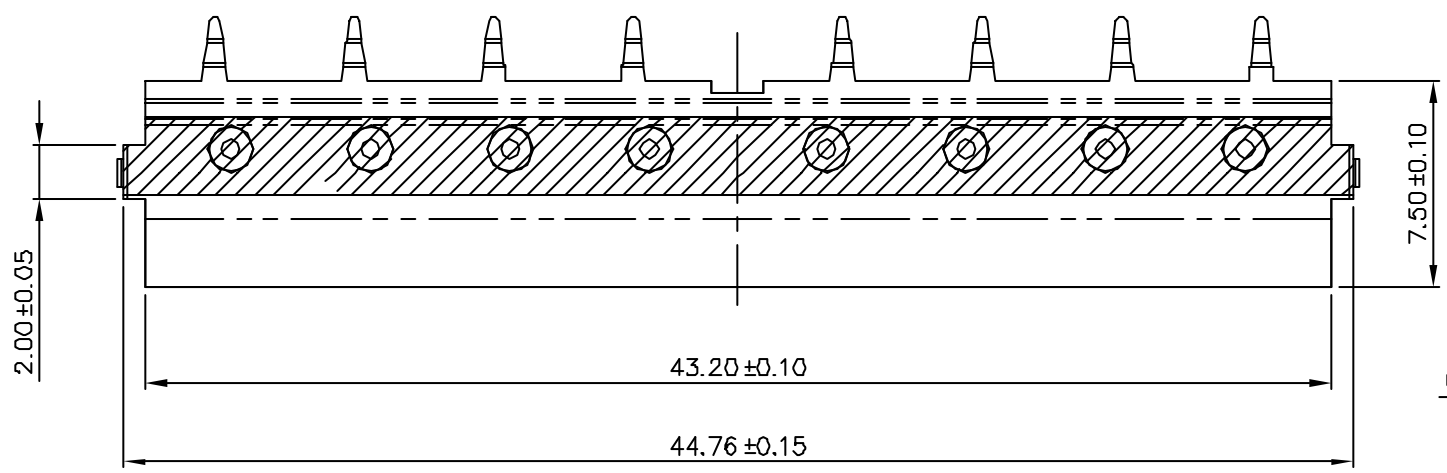
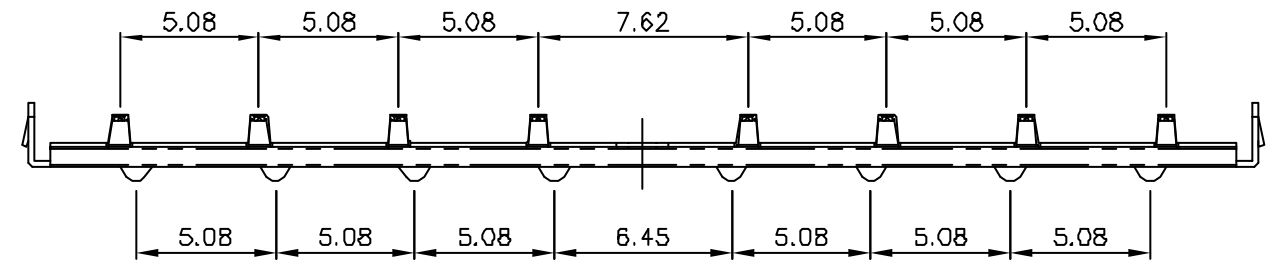
HK

DATE

UNIT / mm

SCALE 1:1

PROJECTION



Note  
 1. Material:  
 Metal- Copper Alloy  
 2. Plating:  
 Underplate : 50u"(1.25um) Nickel  
 Solder Tails : 100u"(2.54um) Tin without lead

UC	0.25±0.05	9.30±0.20
DC	0.25±0.05	9.00±0.20
DB	0.80±0.05	9.10±0.20
D6	0.60±0.05	9.10±0.20
D4	0.40±0.05	9.00±0.20
00	0.00±0.05	9.00±0.20
Offset Type	Offset Dim.(mm)	L(mm)
- TABEL 1-		

**MORETHANALL**  
 CONNECTORS  
 ASSEMBLIES

煜倫股份有限公司

PART NO. PCC-SWAxxM-68  
 DWG NO. PCC-SWAxxM-68  
 FILE NO.  
 UNIT / mm    SCALE 1:1

CHECKED BY CY  
 DRAWING BY  
 PROJECTION

TOLERANCES ARE  
 .X ± 0.2  
 .XX ±  
 .XXX ±  
 AWG

DESCRIP TION:					
AREA	REVISIONS	HK	DATE		