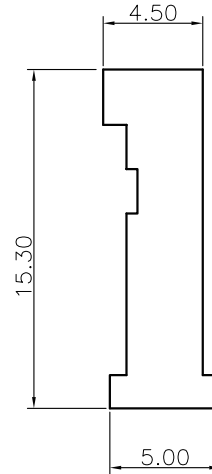
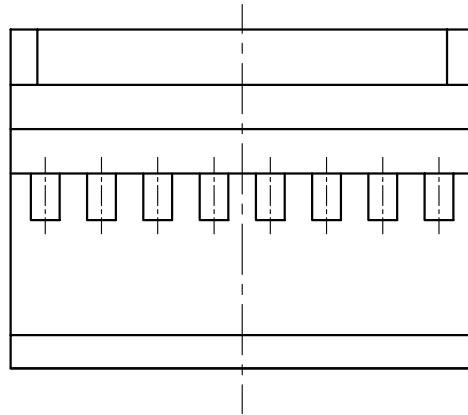
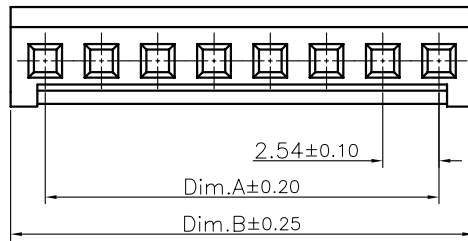


Specifications:
 Current Rating:3.0A AC,DC
 Voltage Rating:250V AC,DC
 Contact Resistance:20mohm Max
 Insulation Resistance:1000Mohm Min.
 Withstanding Voltage:1000V AC/minute
 Operating Temperature Range:-25°C~+85°C
 Material and Finish:
 Insulator:PBT (UL94V-0)
 Insulator Color:Black
 Contact:Phosphor Bronze
 Plating:Tin Plated



Dimension:



Circuits	Dimension:		Circuits	Dimension:	
	A	B		A	B
02	2.54	5.08	12	27.94	30.48
03	5.08	7.62	13	30.48	33.02
04	7.62	10.16	14	33.02	35.56
05	10.16	12.70	15	35.56	38.10
06	12.70	15.24	16	38.10	40.64
07	15.24	17.78	17	40.64	43.18
08	17.78	20.32	18	43.18	45.72
09	20.32	22.86	19	45.72	48.26
10	22.86	25.40	20	48.26	50.80
11	25.40	27.94			

RoHS Compliant

TOLERANCES ARE

MORETHANALL
 PCB CONNECTORS
 Cable ASSEMBLIES

煜倫股份有限公司

www.morethanall.com

DRAWING BY CY

CHECKED BY GENIUS

UNIT/ mm

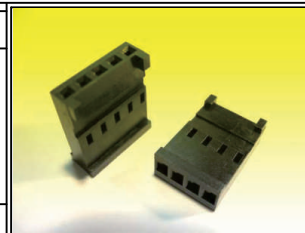
SCALE 1:1

DATE

SIZE A4

X, ±
 .X ± 0.20
 .XX ± 0.15
 .XXX ±
 ANG ±

P PROJECTION



ORDER INFORMATION

HE14-H-1Xxx-LF
 SERIES | LEADFREE
 1X02:02WAY
 1X20:20WAY
 HOUSING

DESCRIPTION: 2.54mm Wire to Board Housing