

1 2 3 4 5 6 7 8 9 0

J

I

H

G

F

E

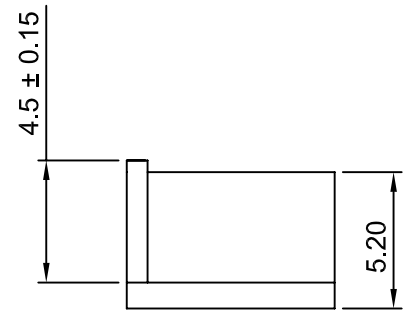
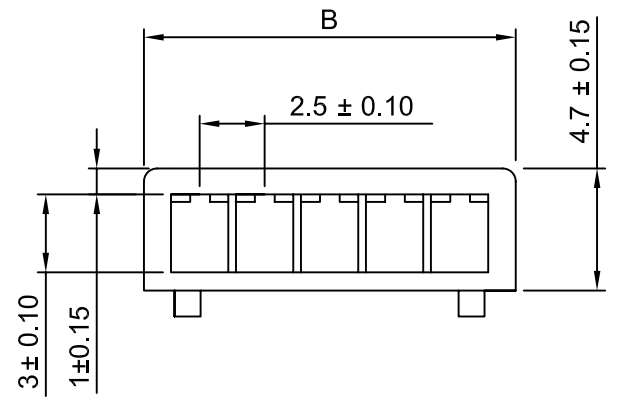
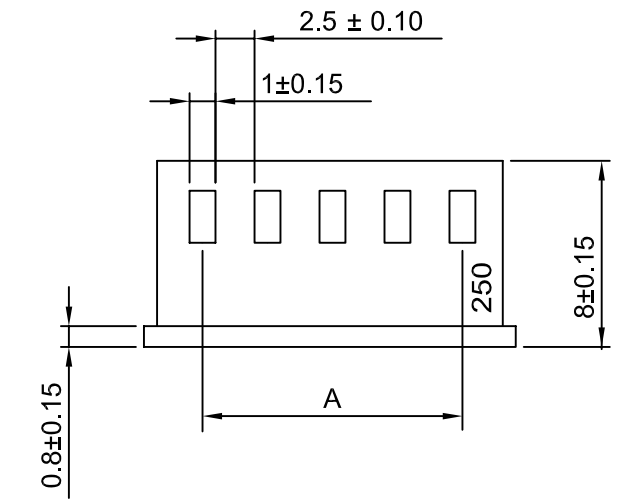
D

C

B

A

SPECIFICATION
 CURRENT RATING: 3A AC,DC
 VOLTAGE RATING: 250V AC,DC
 TEMPERATURE RANGE: -25°C TO +85°C
 (INCLUDING TEMPERATURE RISE)
 CONTACT RESISTANCE: INITIAL VALUE/10M OHM MAX.
 AFTER ENVIRONMENTAL TESTING/20M OHM MAX.
 INSULATION RESISTANCE: 1,000M OHM MIN.
 WITHSTANDING VOLTAGE: 1,000V AC/MINUTE
MATERIAL AND FINISH
 CONTACT: PHOSPHOR BRONZE, TIN-PLATED
 HOUSING: NYLON 66, UL94V-0
 POST: COPPER-UNDERCOATED, TIN/LEAD PLATED
 WAFER: NYLON 66, UL94V-0
 APPLICABLE WIRE: AWG #28 TO #22



CIRCUITS	DIM.A	DIM.B
2	2.50	6.74
3	5.00	9.24
4	7.50	11.74
5	10.00	14.24
6	12.50	16.74
7	15.00	19.24
8	17.50	21.74
9	20.00	24.24
10	22.50	26.74
11	25.00	29.24
12	27.50	31.74
13	30.00	34.24
14	32.50	36.74
15	35.00	39.24

MORETHANALL
 CONNECTORS
 ASSEMBLIES

PART NO. RM-H-xx

DWG NO. RM-H-xx

FILE NO.

APPROVED BY CY

DRAWING BY

TOLERANCES ARE
 X.
 XX.
 XXX.
 AWG

DESCRIPTION:

**2.5MM WIRE TO BOARD
 CONNECTOR**

煜倫股份有限公司

UNIT / mm

SCALE 1:1

PROJECTION

AREA

REVISIONS

HK

DATE