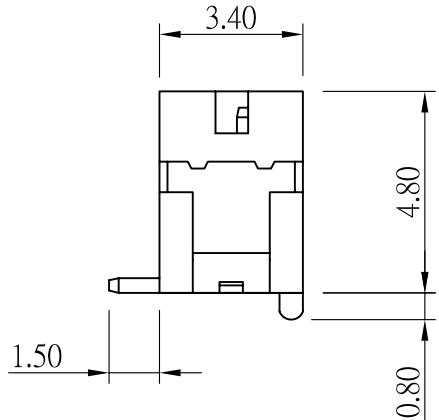
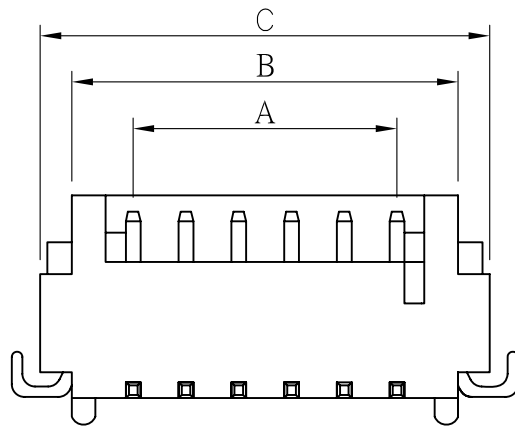


PIN 0.35 SQ



SPECIFICATIONS

Current Rating : 1A AC,DC
 Voltage Rating : 100V AC,DC
 Temperature Range : -25°C~+85°C
 Contact Resistance : 20mΩ Max.
 Insulation Resistance : 500MΩ Min.
 Withstanding Voltage : 500V AC/Min.
 Pin Material : Brass/Tin-plated
 Solder Tabs : Phosphor Bronze/Tin-plated
 Material : Nylon 6T, UL94V-0

DF13-VP_x-1X_{xx}-LF
 LEADFREE
 G:GOLD PLATED
 BLANK:TIN PLATED

RoHS Compliant

Ordering Information & Dimensions

PART NO.	Dimensions		
	A	B	C
DF13-VP-1X02	1.25	4.15	6.25
DF13-VP-1X03	2.50	5.40	7.50
DF13-VP-1X04	3.75	6.65	8.75
DF13-VP-1X05	5.00	7.90	10.00
DF13-VP-1X06	6.25	9.15	11.25
DF13-VP-1X07	7.50	10.40	12.50
DF13-VP-1X08	8.75	11.65	13.75
DF13-VP-1X09	10.00	12.90	15.00
DF13-VP-1X10	11.25	14.15	16.25
DF13-VP-1X11	12.50	15.40	17.50
DF13-VP-1X12	13.75	16.65	18.75
DF13-VP-1X13	15.00	17.90	20.00
DF13-VP-1X14	16.25	19.15	21.25
DF13-VP-1X15	17.50	20.40	22.50

MORETHANALL
CONNECTORS
ASSEMBLIES

煜倫股份有限公司

PART NO.	DF13-VP _x -1X _{xx}	CHECKED BY	CY	TOLERANCES ARE	DESCRIP TION:	1.25mm Wire-to-Board Header SMD 180° TYPE			
DWG NO.	DF13-VP _x -1X _{xx}								
FILE NO.		DRAWING BY		.X±0.2 .XX± .XXX± AWG	AREA	REVISIONS	HK	DATE	
UNIT / mm	SCALE 1:1	PROJECTION							