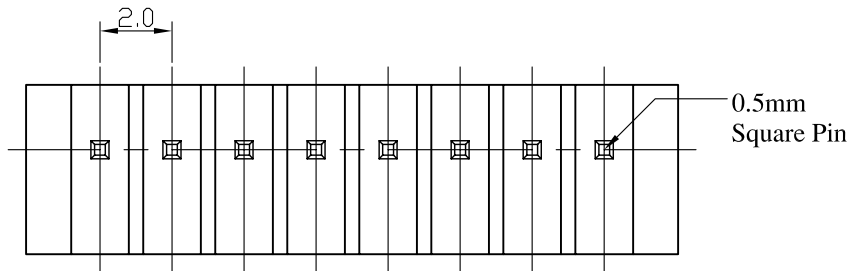
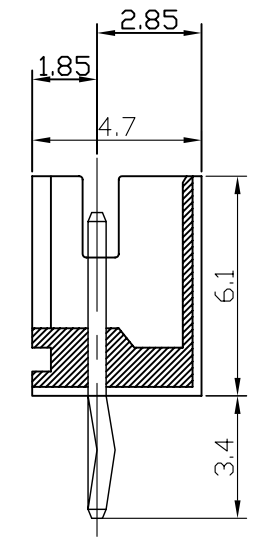
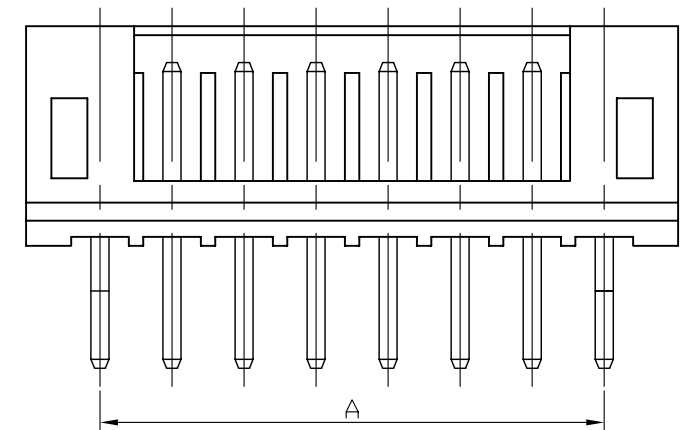


RECOMMENDED P.C. BOARD HOLE DIMM.



Specifications

Electrical

Voltage Rating: 100V(AC)
 Current Rating: 2A
 Contact Resistance: 20m Ω max.
 Dielectric Withstandeig Voltage: 800V AC/1min.
 Insulation Resistance: 1000m Ω min.

Material

Circuits: 2~16
 Insulator: Nylon 66 UL 94V-0
 Color: White or Natural
 Contact: Brass 0.50mm(0.20") Square Pin
 Plating: Tin or Gold Plated
 Temperature Range: -25° C~+85° C
 Applicable PC Board Thickness: 0.8 to 1.6mm

Poles	Dimension mm (in.)		Part No.	Note.
	A	B		
2	2.0(0.079)	6.1(0.240)	PH-D-02	
3	4.0(0.157)	8.1(0.318)	PH-D-03	
4	6.0(0.236)	10.1(0.397)	PH-D-04	
5	8.0(0.315)	12.1(0.476)	PH-D-05	
6	10.0(0.394)	14.1(0.555)	PH-D-06	
7	12.0(0.472)	16.1(0.634)	PH-D-07	
8	14.0(0.551)	18.1(0.713)	PH-D-08	
9	16.0(0.630)	20.1(0.791)	PH-D-09	
10	18.0(0.709)	22.1(0.870)	PH-D-10	
11	20.0(0.787)	24.1(0.949)	PH-D-11	
12	22.0(0.886)	26.1(1.028)	PH-D-12	
13	24.0(0.945)	28.1(1.106)	PH-D-13	
14	26.0(1.024)	30.1(1.185)	PH-D-14	
15	28.0(1.102)	32.1(1.263)	PH-D-15	
16	30.0(1.181)	34.1(1.343)	PH-D-16	

PH-D-xx-LF
 LEADFREE

RoHS Compliant



PART NO. PH-D-xx

DWG NO. PH-D-xx

CHECKED BY CY

TOLERANCES ARE

DESCRIP TION: 2.0mm Wire-to-Board Header
 DIP 180° Type

煜倫股份有限公司

FILE NO.
 UNIT / mm

DRAWING BY
 SCALE 1:1

PROJECTION

.X ± 0.2
 .XX ±
 .XXX ±
 AWG

AREA	REVISIONS	HK	DATE