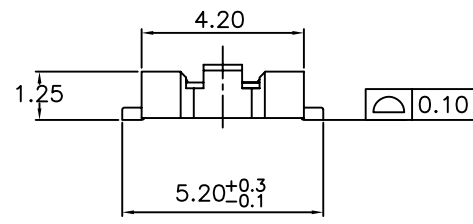
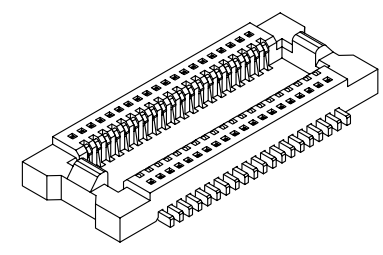


RECOMMENDED P.C.B LAYOUT
TOLERANCE ±0.05



Board-to-Board Offset
Application Example

Position Dimension	10 Thru 100
A	0.40 X No. of Positions /2+3.10
B	0.40 X No. of Positions /2+0.95
C	0.40 X No. of Positions /2-0.40

Material:

Housing: High temperature housing UL94V-0
Contacts: Phosphor Bronze.

Electrical Characteristics:

Current Rating: 0.5 AMP.
Dielectric Withstanding Voltage: AC 100V For 1 minute.
Insulator Resistance: 50MΩ min. at DC 100V.
Contact Resistance: 60mΩ max. at AC 1mA.
Operating Temperature: -55°C ~+85°C.

***RoHS Compliant**

NP04-S12X-xxx-LF
 POSITION LEADFREE
 RoHS Compliant



PART NO. NP04-S12X-xxx

DWG NO. NP04-S12X-xxx

FILE NO.

UNIT / mm

SCALE 1:1

CHECKED BY CY

DRAWING BY

PROJECTION

TOLERANCES ARE
.X ± 0.2
.XX ± 0.1
.XXX ±
AWG

DESCRIPTION:

AREA

REVISIONS

REVISIONS

HK

HK

DATE

DATE

煜倫股份有限公司