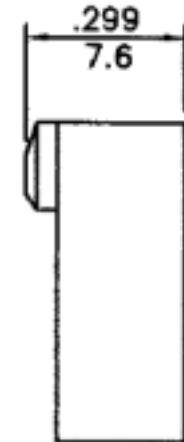
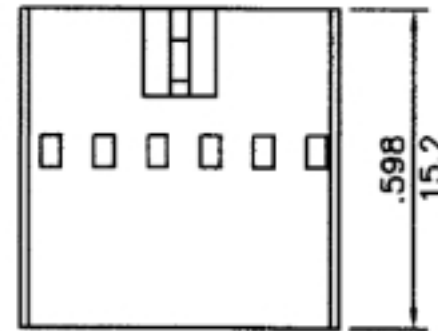
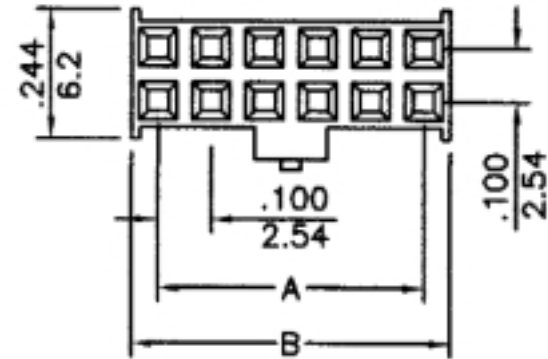


- \* Poles:6-36
- \* Material:PBTP UL94V-0,BLACK

Specifications

- \* Current rating: 3A AC, DC
- \* Voltage rating: 250V AC, DC
- \* Temperature range: -25°C~+85°C
- \* Insulation resistance: 1,000M Ω min.
- \* Withstand voltage: 1,000AC/minute



CIRCUITS	DIMENSION in.(mm)		CIRCUITS	DIMENSION in.(mm)	
	A	B		A	B
6	0.200(5.08)	0.300(7.62)	22	1.000(25.40)	1.100(27.94)
8	0.300(7.62)	0.400(10.16)	24	1.100(27.94)	1.200(30.48)
10	0.400(10.16)	0.500(12.70)	26	1.200(30.48)	1.300(33.02)
12	0.500(12.70)	0.600(15.24)	28	1.300(33.02)	1.400(35.56)
14	0.600(15.24)	0.700(17.78)	30	1.400(35.56)	1.500(38.10)
16	0.700(17.78)	0.800(20.32)	32	1.500(38.10)	1.600(40.64)
18	0.800(20.32)	0.900(22.86)	34	1.600(40.64)	1.700(43.18)
20	0.900(22.86)	1.000(25.40)	36	1.700(43.18)	1.800(45.72)

RoHS Compliant

TOLERANCES ARE

**MORETHANALL**  
PCB CONNECTORS  
Cable ASSEMBLIES

煜倫股份有限公司

www.morethanall.com

DRAWING BY CY

CHECKED BY GENIUS

UNIT / mm

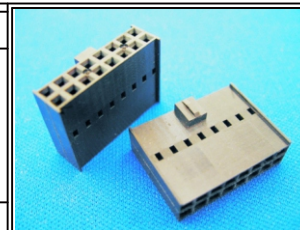
SCALE 1:1

DATE

SIZE A4

PJECTION

X, ±  
.X ±  
.XX ±  
.XXX ±  
ANG ±



ORDER INFORMATION

MCT-H-2Xxx-LF  
SERIES | LEADFREE  
2X03:6PIN  
2X18:36PIN  
HOUSING

DESCRIPTION: