

■ HOUSING

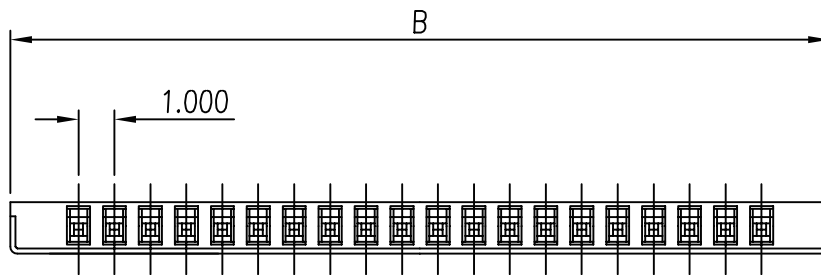
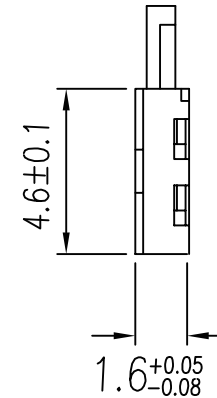
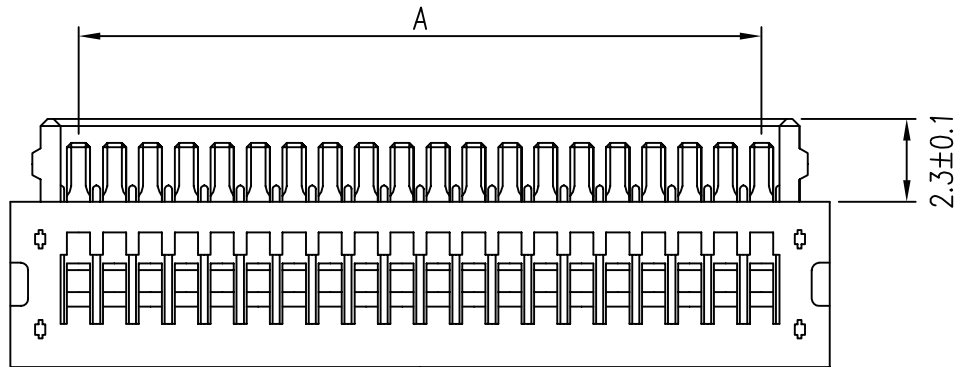
- **Material:**

Housing : Nylon 46, UL94-V0

Shell : Copper alloy/Tin plated

- **Pitch: 1.0mm (.039")**

- **Poles: 20, 30**



CIRCUITS	PART NO.	DIMENSION	
		A	B
20	FIX-H-20	19.00	23.30
30	FIX-H-30	29.00	33.30

RoHS Compliant

TOLERANCES ARE

MORETHANALL
PCB CONNECTORS
Cable ASSEMBLIES

DRAWING BY CY

CHECKED BY GENIUS

UNIT / mm

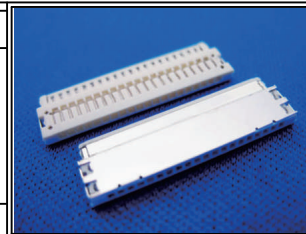
SCALE 1 : 1

DATE

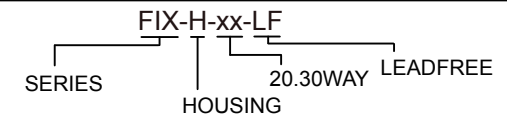
SIZE A4

P PROJECTION

X, ±
.X ±
.XX ±
.XXX ±
ANG ±



ORDER INFORMATION



煜倫股份有限公司

www.morethanall.com

DESCRIPTION: 1.0mm(.039") CENTER HOUSING