

**MATERIALS:**

HOUSING: GLASS FILLED THERMOPLASTIC  
BLACK, UL94V-0

CONTACT: BRASS

SHELL: STEEL,  
TIN OVER NICKEL PLATED

TEMPERATURE RANGE: -20°C to +85°C

**ELECTRICAL:**

Voltage rating: 500VAC. R.M.S.

Current rating: 1.5 AMP

Insulation resistance:  
1000 Megohms Min.

Contact resistance:  
20milliohms MAX. (initial)

DVI-PA1T<sub>xx</sub>-24+5-LF

LEADFREE

65:6.5mm/DIAMETER=A

A1:11.0mm/DIAMETER=A

RoHS Compliant

**MORETHANALL**  
CONNECTORS  
ASSEMBLIES

PART NO. DVI-PA1T<sub>xx</sub>-24+5

DWG NO. DVI-PA1T<sub>xx</sub>-24+5

FILE NO.

UNIT / mm

SCALE 1:1

CHECKED BY CY

DRAWING BY

PROJECTION

TOLERANCES ARE

.X ± 0.2

.XX ±

.XXX ±

AWG

DESCRIPTION:

**DVI SOLDER TYPE MALE**  
**29PIN(24+5)**  
**(ANALOG/DIGITAL)**

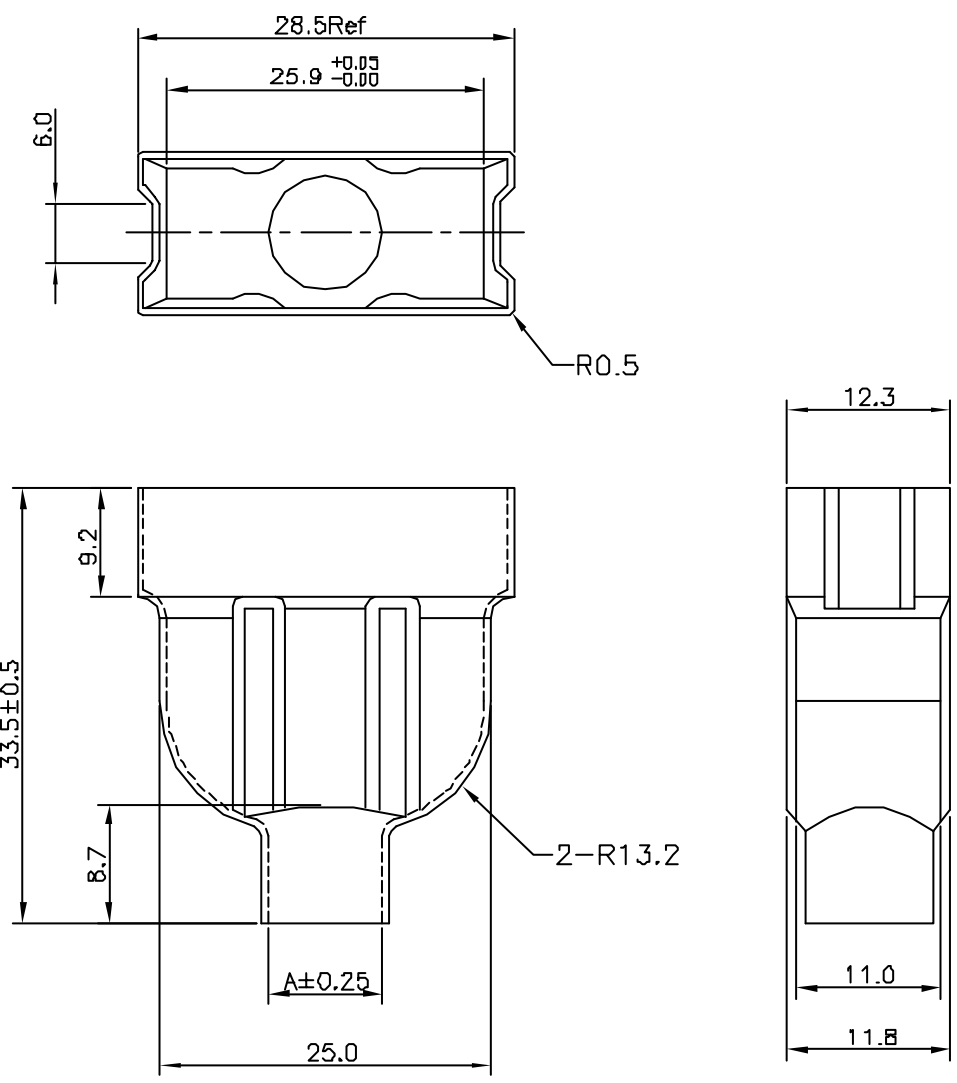
AREA

REVISIONS

HK

DATE

焯倫股份有限公司

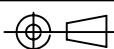


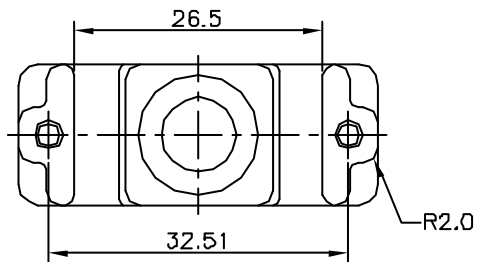
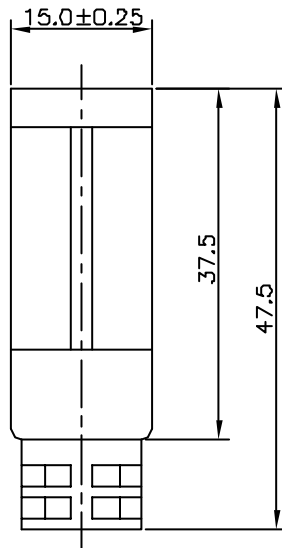
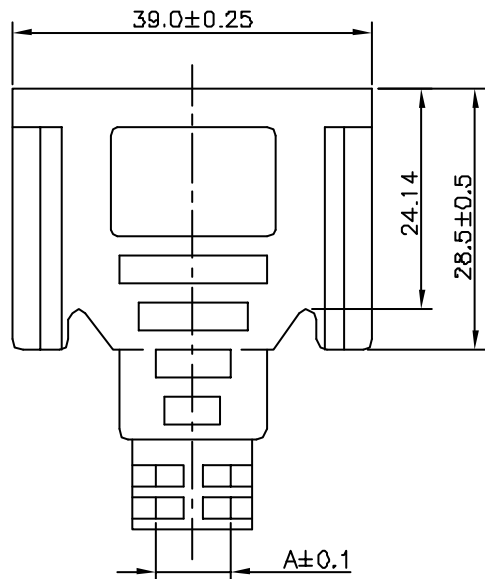
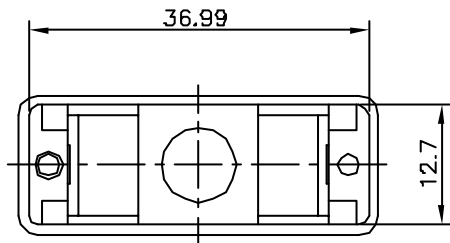
**NOTE:**  
 MATERIAL: SPCC  
 THICKNESS:  $0.5 \pm 0.05$ mm  
 FINISH:  
 Cu:200u", Tin:100u"  
 Ni:30u" ~ 50u"  
 A= $\phi 6.5, \phi 7.0, \phi 7.5, \phi 8.0, \phi 8.5,$   
 $\phi 9.0, \phi 9.5, \phi 10.0, \phi 11.0$

RoHS Compliant

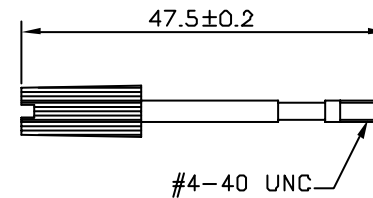
**MORETHANALL**  
 CONNECTORS  
 ASSEMBLIES

焯倫股份有限公司

PART NO. DVI-PA1Txx-24+5		CHECKED BY CY	TOLERANCES ARE .X $\pm$ 0.2 .XX $\pm$ .XXX $\pm$ AWG	DESCRIPTION: <b>DVI SHIELDED PLUG</b>			
DWG NO. DVI-PA1Txx-24+5				DRAWING BY	AREA	REVISIONS	HK
UNIT / mm	SCALE 1:1	PROJECTION 					



NOTE:  
 MATERIAL: PVC  
 A=∅5.5,∅6.5,∅7.8,∅9.0,∅9.5



SCREW 2 PIECE

RoHS Compliant

**MORETHANALL**  
 CONNECTORS  
 ASSEMBLIES

PART NO. DVI-PA1Txx-24+5

DWG NO. DVI-PA1Txx-24+5

CHECKED BY CY

TOLERANCES ARE

DESCRIP TION:

FILE NO.

DRAWING BY

.X ± 0.2

.XX ±

.XXX ±

AWG

AREA

REVISIONS

HK

DATE

煜倫股份有限公司

UNIT / mm

SCALE 1:1

PROJECTION

