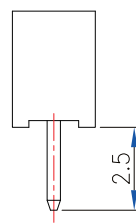
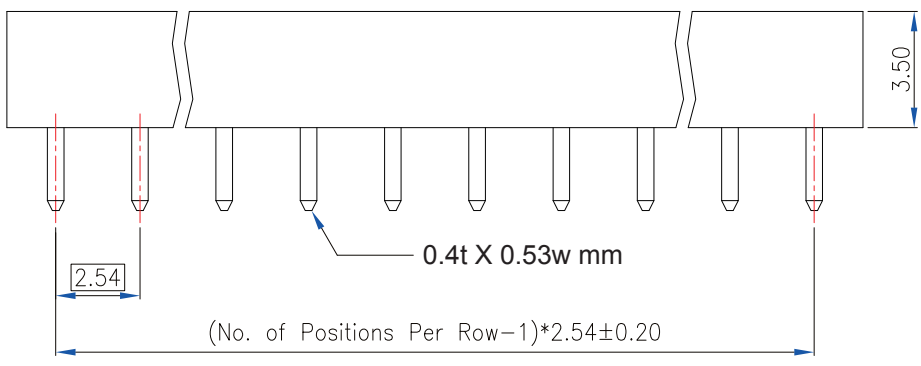


**PCB Layout  
(Top View)**



**Material and Finish**

- 1. Housing: PBT (UL94V-0), Black.
- 2. Terminal: Copper Alloy (t=0.40mm), Gold Plating.

**Electrical Characteristics**

- 1. Current Rating: 3.0 Amp. Max..
- 2. Dielectric Withstand Voltage: 1000V AC RMS for 60Seconds.
- 3. Insulation Resistance: 1000M Ohms Min. at 1000V DC.
- 4. Contact Resistance: 30m Ohms Max.

**Mechanical Characteristics**

- 1. Operating Temperature: -55°C ~ +105°C

**RoHS Compliant**

TOLERANCES ARE



**煜倫股份有限公司**

[www.morethanall.com](http://www.morethanall.com)

DRAWING BY CY

CHECKED BY GENIUS

UNIT/ mm

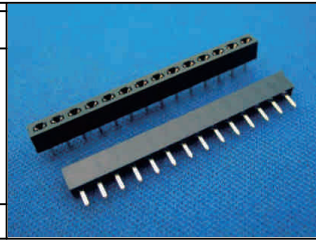
SCALE 1:1

DATE

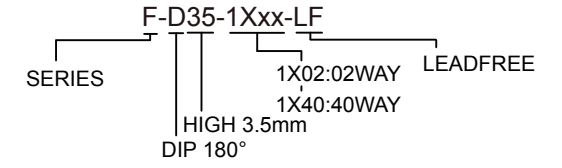
SIZE A4

PPOJECTION

X. ±  
.X ± 0.20  
.XX ± 0.10  
.XXX ±  
ANG ±



**ORDER INFORMATION**



DESCRIPTION: 2.54mm Post Header Receptacle  
PCB Mount Vertical Type Single Row (H=3.50mm)