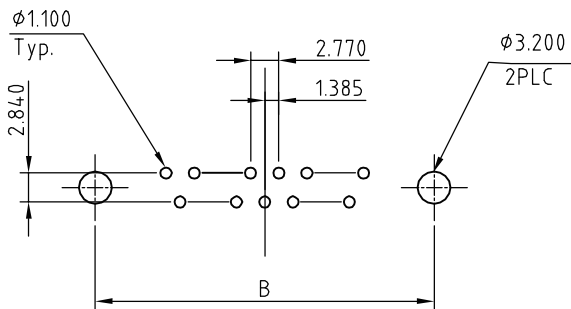


Recommend Layout PCB.



### ELECTRICAL CHARACTERISTICS

Contact Current Rating:3Amperes.  
 Dielectric Withstanding Voltage:AC 500V at sea level.  
 Insulation Resistance:1000Megohms Min.  
 Contact Resistance:30Milliohms Max.  
 Operation Temperature : -55°C to +105°C.

### Material

Contact :Copper Alloy.  
 Insulator:PBT.  
 Shell: SPCC.  
 Screw: Copper Alloy.  
 Boardlock: Copper Alloy

Note:

No.	A	B	C	D
09	16.33	24.99	30.81	19.23
15	24.66	33.32	39.14	27.56
25	38.38	47.04	53.04	41.28
37	54.84	63.50	69.32	57.33

RoHS Compliant

TOLERANCES ARE

**MORETHANALL**  
 PCB CONNECTORS  
 Cable ASSEMBLIES

煜倫股份有限公司

www.morethanall.com

DRAWING BY CY

CHECKED BY GENIUS

UNIT/ mm

SCALE 1:1

DATE

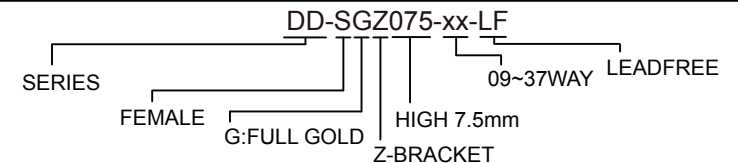
SIZE A4

PJECTION

X.  $\pm$   
 .X  $\pm$  0.30  
 .XX  $\pm$  0.25  
 .XXX  $\pm$  0.15  
 ANG  $\pm$  2°



### ORDER INFORMATION



DESCRIPTION: D-SUB Female 180D- DIP