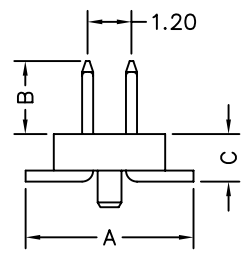
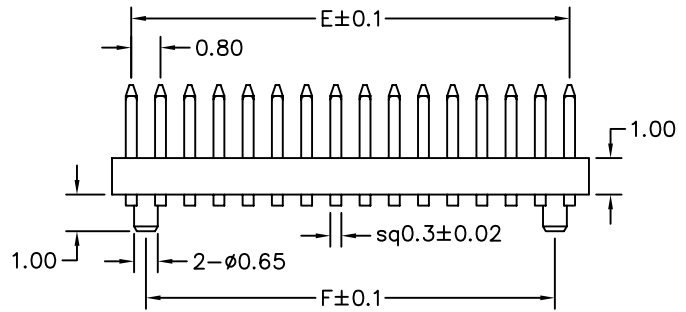
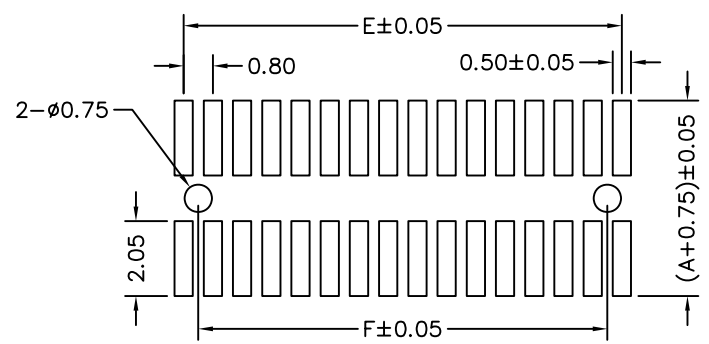


MATERIAL
 Insulator : NYLON 9T
 Contact Pin : Brass

SPECIFICATION
 Current Rate : 1 AMP
 Insulation Resistance : 5000MΩMin. at DC 500V
 Contact Resistance : 15mΩMax.
 Dielectric Voltage : AC 500V for one minute
 Operation Temperature : -40°C to + 105°C



1. Dual rows
Plastic Height=1.0mm
2. No. of contacts per row
3. G: Gold flash
B: 10u" Gold plated
4. B: Black Insulator
5. Pinrex internal code.



Recommended P.C.B Layout

H8-V13PCR-2Xxx-LF
 R: REEL
 C: CAP
 P: POST
 LEADFREE
 xx: PINS PER ROW

RoHS Compliant

CODE	DIM A	DIM B	DIM C
H8-V13PCR-2Xxx	4.60	2.00	1.30

If you need other dimensions,
 please fill out Dim A/B/C or
 contact our sales representatives.

DIM A	DIM B	DIM C

POLES	DIM E	DIM F	POLES	DIM E	DIM F	POLES	DIM E	DIM F
3	1.60	0.80	19	14.40	13.60	35	27.20	26.40
4	2.40	1.60	20	15.20	14.40	36	28.00	27.20
5	3.20	2.40	21	16.00	15.20	37	28.80	28.00
6	4.00	3.20	22	16.80	16.00	38	29.60	28.80
7	4.80	4.00	23	17.60	16.80	39	30.40	29.60
8	5.60	4.80	24	18.40	17.60	40	31.20	30.40
9	6.40	5.60	25	19.20	18.40	41	32.00	31.20
10	7.20	6.40	26	20.00	19.20	42	32.80	32.00
11	8.00	7.20	27	20.80	20.00	43	33.60	32.80
12	8.80	8.00	28	21.60	20.80	44	34.40	33.60
13	9.60	8.80	29	22.40	21.60	45	35.20	34.40
14	10.40	9.60	30	23.20	22.40	46	36.00	35.20
15	11.20	10.40	31	24.00	23.20	47	36.80	36.00
16	12.00	11.20	32	24.80	24.00	48	37.60	36.80
17	12.80	12.00	33	25.60	24.80	49	38.40	37.60
18	13.60	12.80	34	26.40	25.60	50	39.20	38.40



PART NO. H8-V13PCR-2Xxx

DWG NO. H8-V13PCR-2Xxx

FILE NO.

APPROVED BY CY

DRAWING BY

TOLERANCES ARE
 .X ± 0.3
 .XX ± 0.15
 .XXX
 ANG.=±3

DESCRIPTION:
 AREA

PIN HEADER 0.8*1.2mm
 SMT S/T TYPE, DUAL ROWS
 HEIGHT=1.0mm
 REVISIONS
 HK
 DATE

煜倫股份有限公司

UNIT / mm

SCALE 1:1

PROJECTION