

NOTES:

1.MATERIALS:

INSULATOR: GLASS FIBER REINFORCED THERMOPLASTIC  
LCP UL94V-0.

CONTACT: PHOSPHOR BRONZE, GOLD FLASH ON CONTACT,  
TIN PLATED ON TAIL 100μ", OVER NICKEL PLATED 50μ".

SHELL: STEEL, NICKEL PLATED.

BOARD LOCK: BRASS, TIN PLATED.

RIVET: BRASS, NICKEL PLATED.

2.ELECTRICAL:

INSULATION RESISTANCE: 1000 MEGOHMS MINIMUM

DIELECTRIC WITHSTANDING VOLTAGE: 500V AC

VOLTAGE RATING: 40 VOLTS AC(RMS) MAXIMUM

CURRENT RATING: 3.0 AMPS PER CIRCUIT

CONTACT RESISTANCE: 20 MILLIOHMS MAXIMUM

3.MECHANICAL PERFORMANCE:

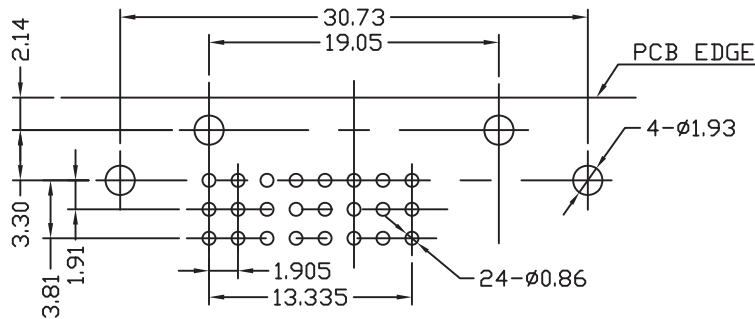
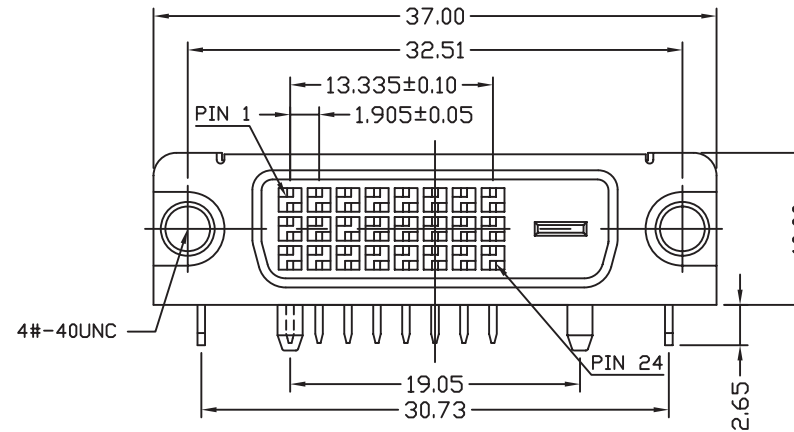
MATING FORCES: 4.5kgf MAXIMUM

UNMATING FORCES: 1kgf MINIMUM, 4kgf MAXIMUM

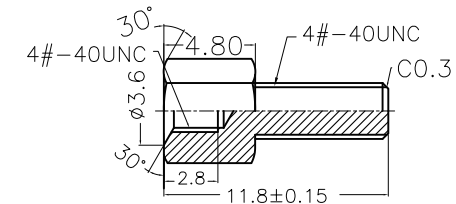
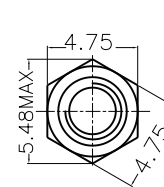
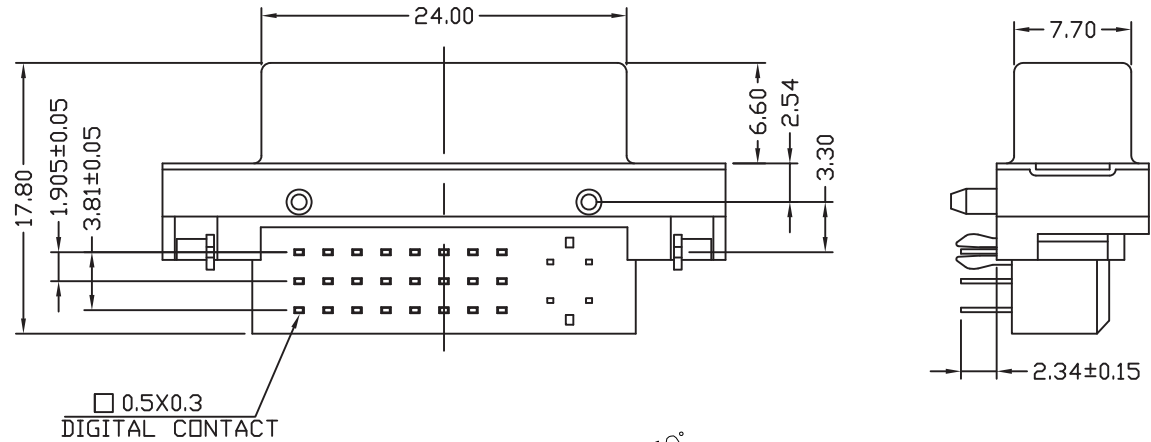
DURABILITY: 100 CYCLES MINIMUM

4.ENVIRONMENTAL:

TEMPERATURE RANGE: -20°C TO +85°C



PCB LAYOUT (BOTTOM VIEW) TOLERANCE: ±0.05



NOTES

1.MATERIAL:BRASS/STEEL

RoHS Compliant

TOLERANCES ARE

**MORETHANALL**  
PCB CONNECTORS  
Cable ASSEMBLIES

煜倫股份有限公司

www.morethanall.com

DRAWING BY CY

CHECKED BY GENIUS

UNIT/mm

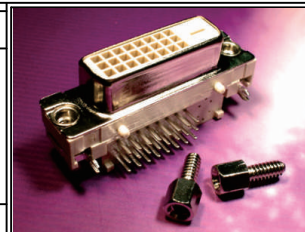
SCALE 1:1

DATE

SIZE A4

PJECTION

X, ±  
.X ± 0.38  
.XX ± 0.25  
.XXX ±  
ANG ±



ORDER INFORMATION

DVI-SRHH-24+1-LF

SERIES FEMALE NUT DIP 90°  
LEADFREE  
24+1 PIN  
HEX SCREW

DESCRIPTION: DVI 24PIN 母半金白色無後鐵殼(BC)