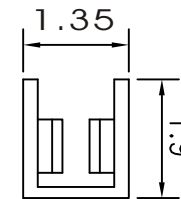
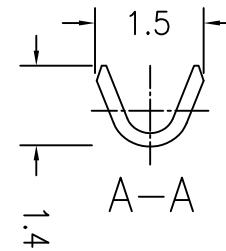
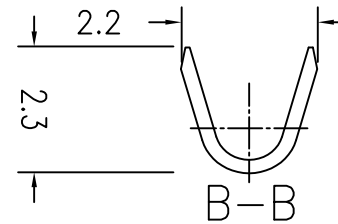
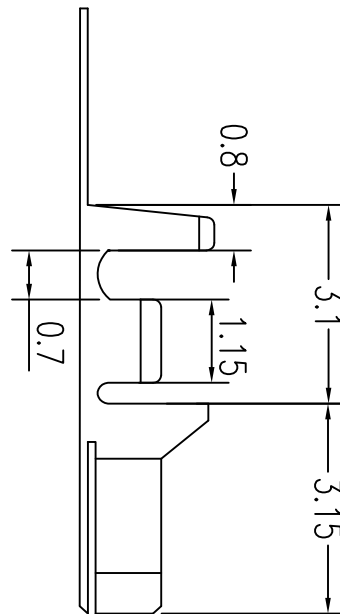
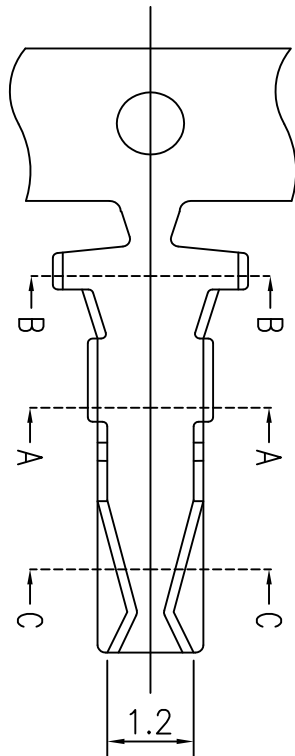


Features:

- * Accepts AWG 26~30 wire range
- Material : Phosphor Bronze
- Finish : Tin-plated & Gold-flash
- * Qty/reel: 10000 PCS
- * Thickness:0.2
- * Tolerance±0.2mm

Specification :

- Pitch between poles 2.0mm
- Rate Voltage 250V AC,DC
- Rated Current 1A.AC,DC
- * Applicable Wire AWG#26~#30



C-C



PART NO. YH20-T-26

DWG NO. YH20-T-26

FILE NO.

UNIT / mm

SCALE 1:1

APPROVED BY CY

DRAWING BY

PROJECTION

TOLERANCES ARE

.X
.XX
.XXX
AWG

DESCRIPTION:

AREA

REVISIONS

HK

DATE

煜倫有限公司