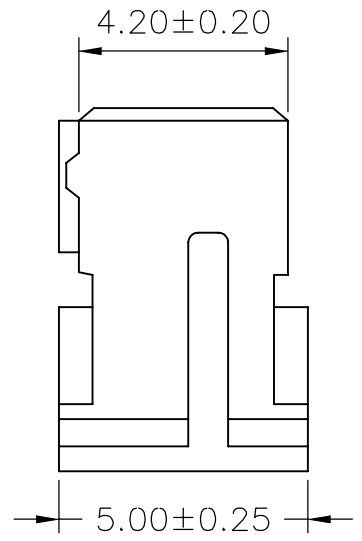
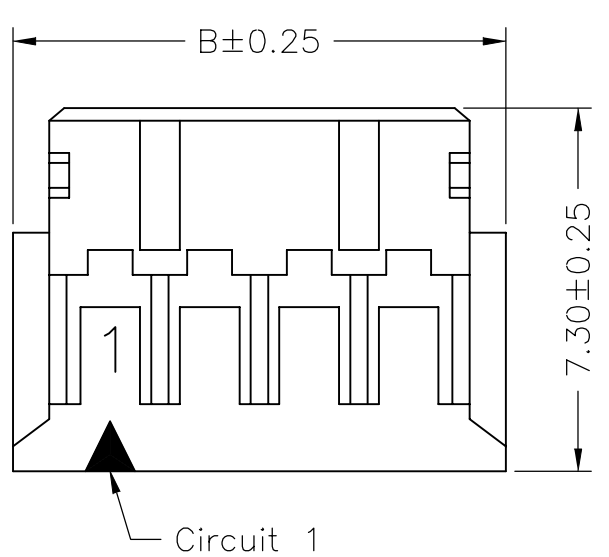


**SPECIFICATIONS**  
 Current Rating: 2A AC,DC  
 Voltage Rating: 250V AC,DC  
 Temperature Range: -25°C ~ +85°C  
 Contact Resistance: 20mΩ Max.  
 Insulation Resistance: 1000MΩ Min.  
 Withstanding Voltage: 800V AC/minute  
 Material: Nylon 66,UL94V-0

**Ordering Information & Dimensions**

PART NO.	Dimensions	
	A	B
PHD-H-04	2.00	5.90
PHD-H-06	4.00	7.90
PHD-H-08	6.00	9.90
PHD-H-10	8.00	11.90
PHD-H-12	10.00	13.90
PHD-H-14	12.00	15.90
PHD-H-16	14.00	17.90
PHD-H-18	16.00	19.90
PHD-H-20	18.00	21.90
PHD-H-22	20.00	23.90
PHD-H-24	22.00	25.90
PHD-H-26	24.00	27.90
PHD-H-28	26.00	29.90
PHD-H-30	28.00	31.90
PHD-H-32	30.00	33.90
PHD-H-34	32.00	35.90
PHD-H-36	34.00	37.90
PHD-H-38	36.00	39.90
PHD-H-40	38.00	41.90



**MORETHANALL**  
 CONNECTORS  
 ASSEMBLIES

煜倫股份有限公司

PART NO. <b>PHD-H-xx</b>		CHECKED BY CY	TOLERANCES ARE .X±0.2 .XX± .XXX± AWG	DESCRIP TION: <b>2.00mm PITCH HOUSING</b>					
DWG NO. <b>PHD-H-xx</b>									
FILE NO.		DRAWING BY	UNIT / mm	SCALE 1:1	PROJECTION	AREA	REVISIONS	HK	DATE
SCALE 1:1		PROJECTION							