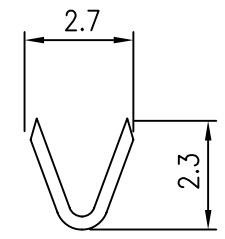
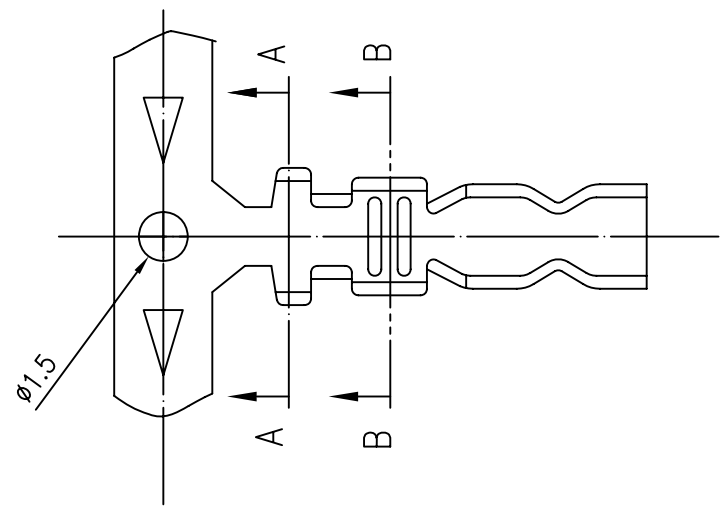
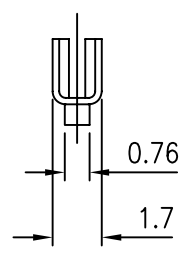
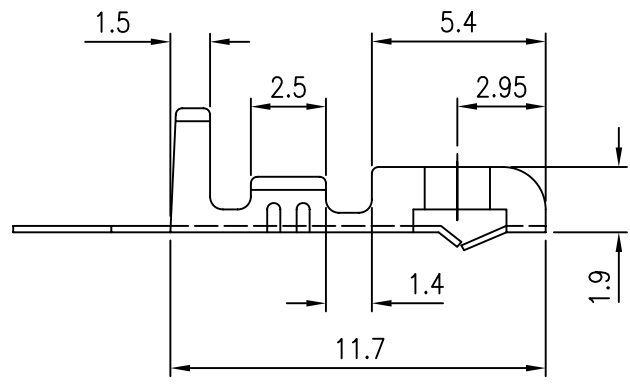


■ **TERMINAL**

- Part No: EI-T-22
- Material: Brass
- Thickness: 0.2mm
- Plating: Tin plated 60u"
- Wire Range: Suitable for AWG#22~26
- Insulation O.D: 1.75mm (max)
- Q'TY: 10,000 pcs/roll



A-A SECTION



B-B SECTION



PART NO. EI-T-22

DWG NO. EI-T-22

FILE NO.

APPROVED BY CY

DRAWING BY

TOLERANCES ARE  
X  
.XX  
.XXX  
AWG

DESCRIPTION: EI SERIES 2.54mm Pitch Terminal

煜倫股份有限公司

UNIT / mm

SCALE 1:1

PROJECTION

AREA

REVISIONS

HK

DATE