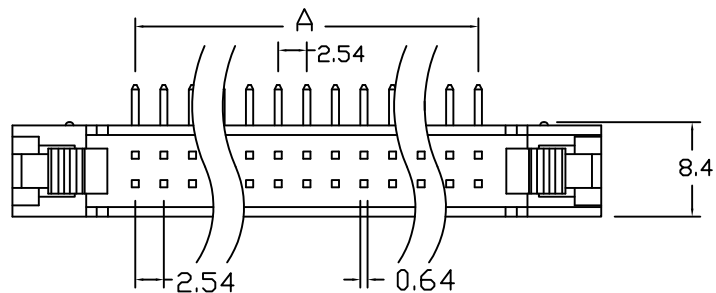
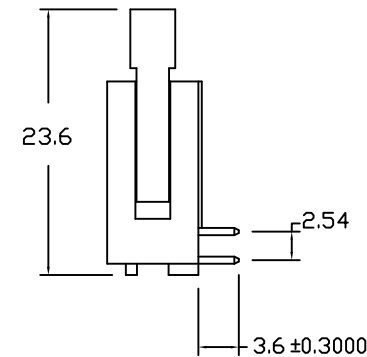
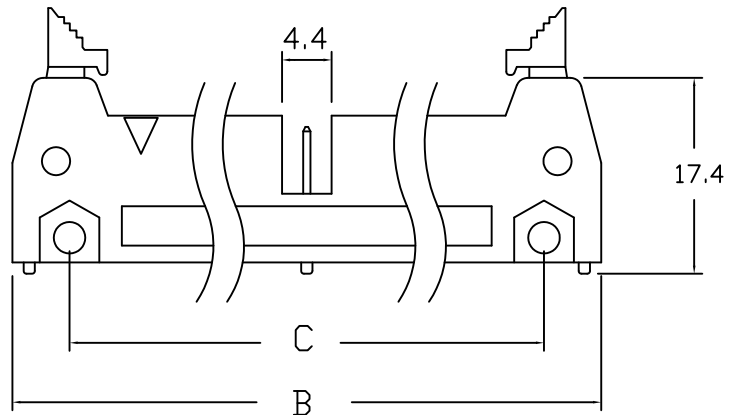


**SPECIFICATIONS:**

Material:  
 Insulator: PBT, rated UL94V-0  
 Insulator Color Black  
 Contacts: Brass  
 Plating : Gold Flash over Nickel underplate overall  
 Electrical:  
 Operating voltage: 250 VAC max  
 Current rating: 3 Amp max  
 Contact resistance: 20 mohms max  
 Insulation resistance: 5,000 Mohms min 500 VDC  
 Dielectric withstanding voltage: 1,000 VAC for 1 minute  
 Temperature Rating:  
 Operating temperature: -55° to +105°

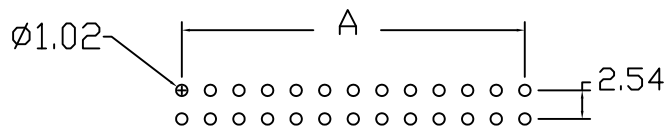


POSITION	A	B	C
10	10.16	32.00	21.84
14	15.24	37.08	26.92
16	17.78	39.62	29.46
20	22.86	44.70	34.54
24	27.94	49.78	39.62
26	30.48	52.32	42.16
30	35.56	57.40	47.24
34	40.64	62.48	52.32
40	48.26	70.10	59.94
50	60.96	82.80	72.64
60	73.66	95.50	85.34
64	78.74	100.58	90.42



L-RS-xx-LF  
 LEADFREE

RoHS Compliant



Recommended PCB Layout



PART NO. L-RS-xx		CHECKED BY CY		TOLERANCES ARE .X ± 0.2 .XX ± 0.1 .XXX ± .01 AWG	DESCRIP TION:			
DWG NO. L-RS-xx		DRAWING BY			AREA	REVISIONS	HK	DATE
FILE NO.		PROJECTION						
UNIT / mm	SCALE 1:1							

煜倫股份有限公司